

# HLA-DQA2 Antibody



PACO33524

---

## Product Information

**Size:**

50ug

**Reactivity:**

Human

**Source:**

Rabbit

**Isotype:**

IgG

**Applications:**

ELISA, IHC

**Recommended dilutions:**

ELISA:1:2000-1:10000, IHC:1:10-1:100

**Protein Background:**

**Gene ID:**

HLA-DQA2

**Uniprot**

P01906

**Synonyms:**

HLA class II histocompatibility antigen, DQ alpha 2 chain (DX alpha chain) (HLA class II histocompatibility antigen, DQ(6) alpha chain) (HLA-DQA1) (MHC class II DQA2), HLA-DQA2, HLA-DXA

**Immunogen:**

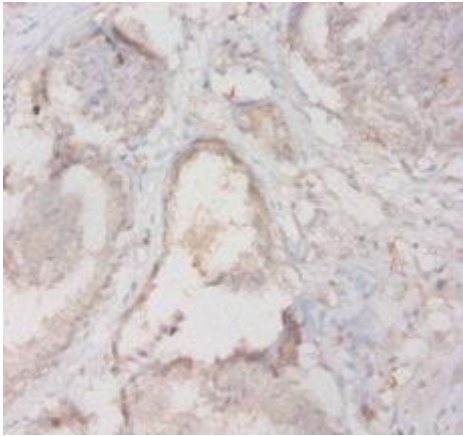
Recombinant Human HLA class II histocompatibility antigen, DQ &alpha; 2 chain protein (24-214AA).

**Storage:**

Preservative: 0.03% Proclin 300. Constituents: 50% Glycerol, 0.01M PBS, PH 7.4

## Product Images

---



Immunohistochemistry of paraffin-embedded human prostate tissue using PACO33524 at dilution of 1:20.