

PACO33496

---

## Product Information

**Size:**

50ug

**Reactivity:**

Human

**Source:**

Rabbit

**Isotype:**

IgG

**Applications:**

ELISA, IHC

**Recommended dilutions:**

ELISA:1:2000-1:10000, IHC:1:20-1:200

**Protein Background:**

Promotes spermatogenesis and ovulation by stimulating the testes and ovaries to synthesize steroids.

**Gene ID:**

LHB

**Uniprot**

P01229

**Synonyms:**

Lutropin subunit beta (Lutropin beta chain) (Luteinizing hormone subunit beta) (LH-B) (LSH-B) (LSH-beta), LHB

**Immunogen:**

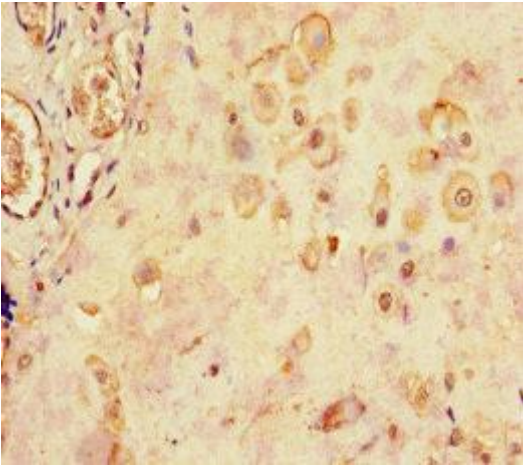
Recombinant Human Lutropin subunit &beta; protein (21-141AA).

**Storage:**

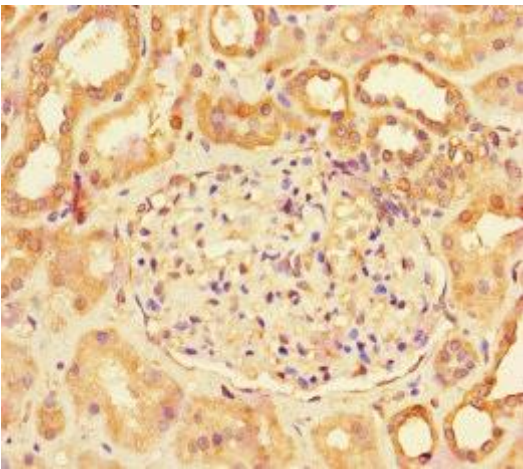
Preservative: 0.03% Proclin 300. Constituents: 50% Glycerol, 0.01M PBS, PH 7.4

## Product Images

---



Immunohistochemistry of paraffin-embedded human placenta tissue using PACO33496 at dilution of 1:100.



Immunohistochemistry of paraffin-embedded human kidney tissue using PACO33496 at dilution of 1:100.