

# MHT1 Antibody



PACO33420

---

## Product Information

**Size:**

50ug

**Reactivity:**

Saccharomyces cerevisiae

**Source:**

Rabbit

**Isotype:**

IgG

**Applications:**

ELISA, WB

**Recommended dilutions:**

ELISA:1:2000-1:10000, WB:1:1000-1:5000

**Protein Background:**

Homocysteine S-methyltransferase involved in the conversion of S-adenosylmethionine (AdoMet) to methionine to control the methionine/AdoMet ratio. Converts also S-methylmethionine (SMM) to methionine.

**Gene ID:**

MHT1

**Uniprot**

Q12525

**Synonyms:**

Homocysteine S-methyltransferase 1 (EC 2.1.1.10) (S-methylmethionine: homocysteine methyltransferase 1) (SMM: Hcy S-methyltransferase 1), MHT1

**Immunogen:**

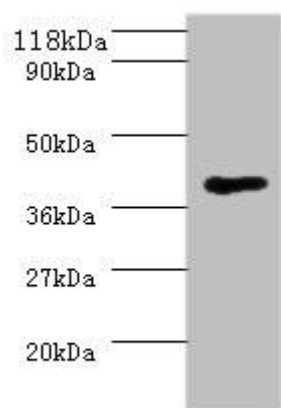
Recombinant Saccharomyces cerevisiae Homocysteine S-methyltransferase 1 protein (1-324AA).

**Storage:**

Preservative: 0.03% Proclin 300. Constituents: 50% Glycerol, 0.01M PBS, PH 7.4

## Product Images

---



### Western blot

All lanes: MHT1 antibody at 2 $\mu$ g/ml + 293T whole cell lysate

Secondary

Goat polyclonal to rabbit IgG at 1/10000 dilution

Predicted band size: 37 kDa

Observed band size: 37 kDa

.