

PACO33416

Product Information

Size:

50ug

Reactivity:

Human

Source:

Rabbit

Isotype:

IgG

Applications:

ELISA, IHC, IF

Recommended dilutions:

ELISA:1:2000-1:10000, IHC:1:20-1:200,
IF:1:50-1:500

Protein Background:

Gene ID:

AGER

Uniprot

Q15109

Synonyms:

Advanced glycosylation end product-specific receptor (Receptor for advanced glycosylation end products), AGER, RAGE

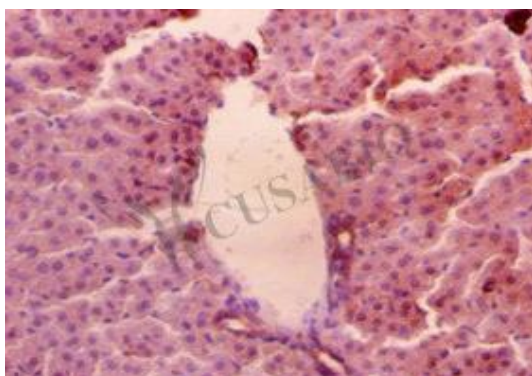
Immunogen:

Recombinant Human Advanced glycosylation end product-specific receptor protein (23-342AA).

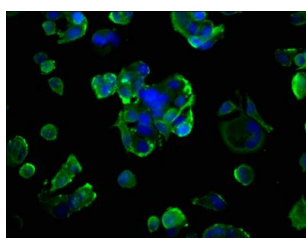
Storage:

Preservative: 0.03% Proclin 300. Constituents: 50% Glycerol, 0.01M PBS, PH 7.4

Product Images



Immunohistochemistry of paraffin-embedded mouse liver tissue using PACO33416 at dilution of 1:50.



Immunofluorescence staining of MCF-7 cells with PACO33416 at 1:200, counter-stained with DAPI. The cells were fixed in 4% formaldehyde, permeabilized using 0.2% Triton X-100 and blocked in 10% normal Goat Serum. The cells were then incubated with the antibody overnight at 4°C. The secondary antibody was Alexa Fluor 488-conjugated AffiniPure Goat Anti-Rabbit IgG(H+L).