

PACO33412

---

## Product Information

**Size:**

50ug

**Reactivity:**

Human, Mouse, Rat

**Source:**

Rabbit

**Isotype:**

IgG

**Applications:**

ELISA, WB, IHC, IF

**Recommended dilutions:**

ELISA:1:2000-1:10000, WB:1:500-1:5000,  
IHC:1:20-1:200, IF:1:50-1:200

**Protein Background:**

NMDA receptor subtype of glutamate-gated ion channels possesses high calcium permeability and voltage-dependent sensitivity to magnesium. Activation requires binding of agonist to both types of subunits.

**Gene ID:**

GRIN2A

**Uniprot**

Q12879

**Synonyms:**

Glutamate receptor ionotropic, NMDA 2A (GluN2A) (Glutamate [NMDA] receptor subunit epsilon-1) (N-methyl D-aspartate receptor subtype 2A) (NMDAR2A) (NR2A) (hNR2A), GRIN2A, NMDAR2A

**Immunogen:**

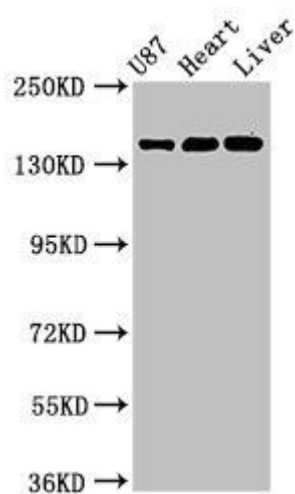
Recombinant Human Glutamate receptor ionotropic, NMDA 2A protein (501-750AA).

**Storage:**

Preservative: 0.03% Proclin 300. Constituents: 50% Glycerol, 0.01M PBS, PH 7.4

## Product Images

---



### Western Blot

Positive WB detected in: U87 whole cell lysate, Rat heart tissue, Mouse liver tissue

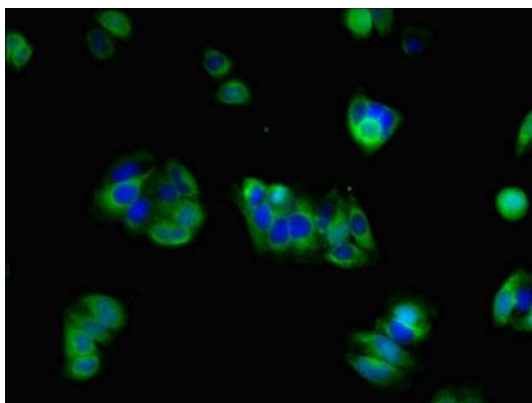
All lanes: GRIN2A antibody at 3.2 $\mu$ g/ml

Secondary

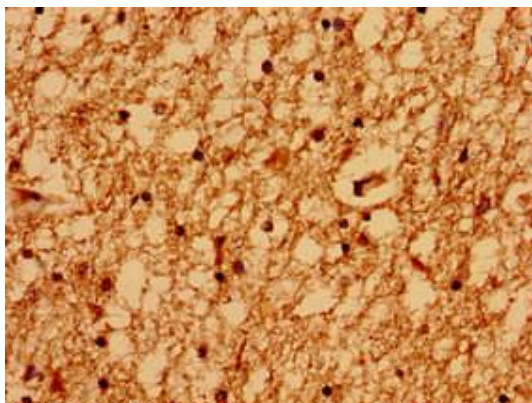
Goat polyclonal to rabbit IgG at 1/50000 dilution

Predicted band size: 166, 145 kDa

Observed band size: 166 kDa



Immunofluorescent analysis of HepG2 cells using PACO33412 at dilution of 1:100 and Alexa Fluor 488-conjugated AffiniPure Goat Anti-Rabbit IgG(H+L).



Immunohistochemistry of paraffin-embedded human brain tissue using PACO33412 at dilution of 1:100.