

PACO33396

---

## Product Information

**Size:**

50ug

**Reactivity:**

Human

**Source:**

Rabbit

**Isotype:**

IgG

**Applications:**

ELISA, WB

**Recommended dilutions:**

ELISA:1:2000-1:10000, WB:1:1000-1:5000

**Protein Background:**

Ras proteins bind GDP/GTP and possess intrinsic GTPase activity. Plays an important role in the tumor-like growth properties of embryonic stem cells.

**Gene ID:**

ERAS

**Uniprot**

Q7Z444

**Synonyms:**

GTPase ERas (E-Ras) (Embryonic stem cell-expressed Ras), ERAS, HRAS2 HRASP

**Immunogen:**

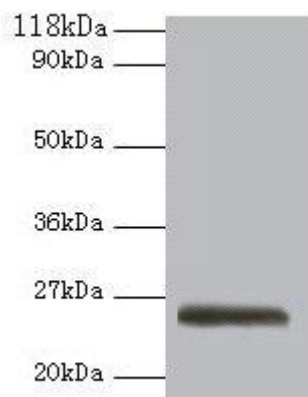
Recombinant Human GTPase ERas protein (3-230AA).

**Storage:**

Preservative: 0.03% Proclin 300. Constituents: 50% Glycerol, 0.01M PBS, PH 7.4

## Product Images

---



### Western blot

All lanes: ERAS antibody at 2 $\mu$ g/ml + 293T whole cell lysate

Secondary

Goat polyclonal to rabbit IgG at 1/10000 dilution

Predicted band size: 26 kDa

Observed band size: 26 kDa