

TROVE2 Antibody



PACO33372

Product Information

Size:

50ug

Reactivity:

Human, Mouse, Rat

Source:

Rabbit

Isotype:

IgG

Applications:

ELISA, WB, IHC, IF

Recommended dilutions:

ELISA:1:2000-1:10000, WB:1:500-1:5000,
IHC:1:20-1:200, IF:1:50-1:200

Protein Background:

RNA-binding protein that binds to several small cytoplasmic RNA molecules known as Y RNAs. May stabilize these RNAs from degradation. May play roles in cilia formation and/or maintenance.

Gene ID:

TROVE2

Uniprot

P10155

Synonyms:

60 kDa SS-A/Ro ribonucleoprotein (60 kDa Ro protein) (60 kDa ribonucleoprotein Ro) (RoRNP) (Ro 60 kDa autoantigen) (Sjogren syndrome antigen A2) (Sjogren syndrome type A antigen) (SS-A) (TROVE domain family member 2), TROVE2, RO60 SSA2

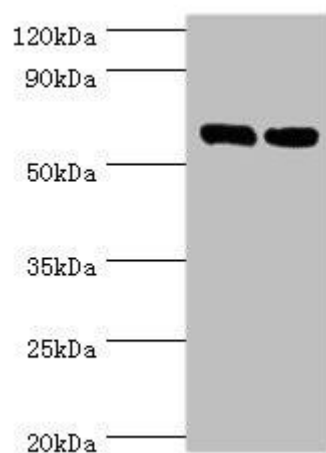
Immunogen:

Recombinant Human 60 kDa SS-A/Ro ribonucleoprotein protein (3-535AA).

Storage:

Preservative: 0.03% Proclin 300. Constituents: 50% Glycerol, 0.01M PBS, PH 7.4

Product Images



Western blot

All lanes: TROVE2 antibody at 2 μ g/ml

Lane 1: Hela whole cell lysate

Lane 2: 293T whole cell lysate

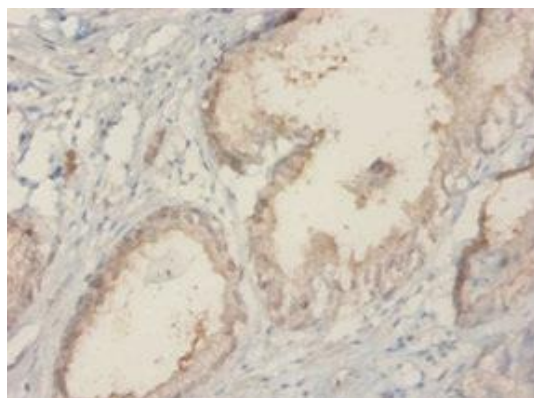
Secondary

Goat polyclonal to rabbit IgG at 1/10000 dilution

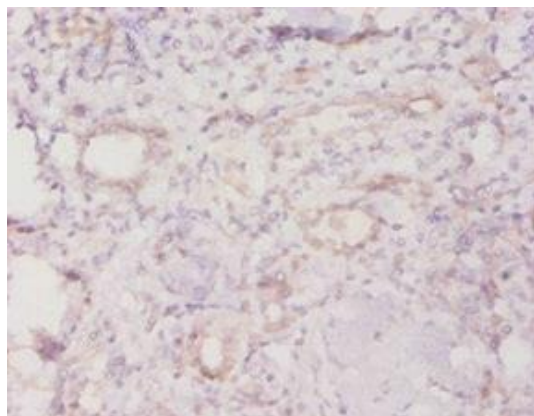
Predicted band size: 61, 24, 59, 60 kDa

Observed band size: 61 kDa

.



Immunohistochemistry of paraffin-embedded human prostate tissue using PACO33372 at dilution of 1:20.



Immunohistochemistry of paraffin-embedded human kidney tissue using PACO33372 at dilution of 1:20.