

# ALPI Antibody



PACO33156

---

## Product Information

**Size:**

50ug

**Reactivity:**

Human

**Source:**

Rabbit

**Isotype:**

IgG

**Applications:**

ELISA, WB

**Recommended dilutions:**

ELISA:1:2000-1:10000, WB:1:1000-1:5000

**Protein Background:**

**Gene ID:**

ALPI

**Uniprot**

P09923

**Synonyms:**

Intestinal-type alkaline phosphatase (IAP) (Intestinal alkaline phosphatase) (EC 3.1.3.1), ALPI

**Immunogen:**

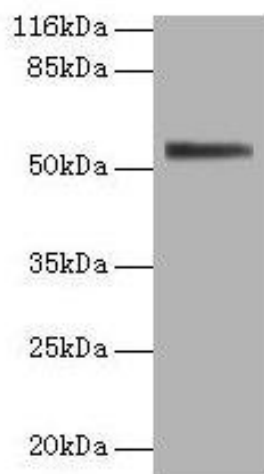
Recombinant Human Intestinal-type alkaline phosphatase protein (26-500AA).

**Storage:**

Preservative: 0.03% Proclin 300. Constituents: 50% Glycerol, 0.01M PBS, PH 7.4

## Product Images

---



Western blot

All lanes: ALPI antibody at 2 $\mu$ g/ml + 293T whole cell lysate

Secondary

Goat polyclonal to rabbit IgG at 1/10000 dilution

Predicted band size: 57 kDa

Observed band size: 57 kDa

.