

Product Information

Size:

50ug

Reactivity:

Human

Source:

Rabbit

Isotype:

IgG

Applications:

ELISA, WB

Recommended dilutions:

ELISA:1:2000-1:10000, WB:1:1000-1:5000

Protein Background:

Produced only during pregnancy and is involved in stimulating lactation, fetal growth and metabolism. Does not interact with GHR but only activates PRLR through zinc-induced dimerization.

Gene ID:

CSH1

Uniprot

P0DML2

Synonyms:

Chorionic somatomammotropin hormone 1 (Choriomammotropin) (Lactogen) (Placental lactogen) (PL), CSH1

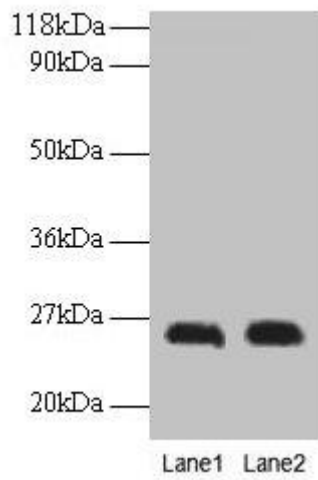
Immunogen:

Recombinant Human Chorionic somatomammotropin hormone 1 protein (27-217AA).

Storage:

Preservative: 0.03% Proclin 300. Constituents: 50% Glycerol, 0.01M PBS, PH 7.4

Product Images



Western blot

All lanes: CSH1 antibody at 2 μ g/ml

Lane 1: A549 whole cell lysate

Lane 2: U251 whole cell lysate

Secondary

Goat polyclonal to rabbit IgG at 1/15000 dilution

Predicted band size: 26 kDa

Observed band size: 26 kDa

.