

PACO32948

---

## Product Information

**Size:**

50ug

**Reactivity:**

Human

**Source:**

Rabbit

**Isotype:**

IgG

**Applications:**

ELISA, WB, IHC

**Recommended dilutions:**

ELISA:1:2000-1:10000, WB:1:1000-1:5000,  
IHC:1:20-1:200

**Protein Background:**

Factor B which is part of the alternate pathway of the complement system is cleaved by factor D into 2 fragments: Ba and Bb. Bb, a serine protease, then combines with complement factor 3b to generate the C3 or C5 convertase. It has also been implicated in proliferation and differentiation of preactivated B-lymphocytes, rapid spreading of peripheral blood monocytes, stimulation of lymphocyte blastogenesis and lysis of erythrocytes. Ba inhibits the proliferation of preactivated B-lymphocytes.

**Gene ID:**

CFB

**Uniprot**

P00751

**Synonyms:**

Complement factor B (EC 3.4.21.47) (C3/C5 convertase) (Glycine-rich beta glycoprotein) (GBG) (PBF2) (Properdin factor B) [Cleaved into: Complement factor B Ba fragment; Complement factor B Bb fragment], CFB, BF BFD

**Immunogen:**

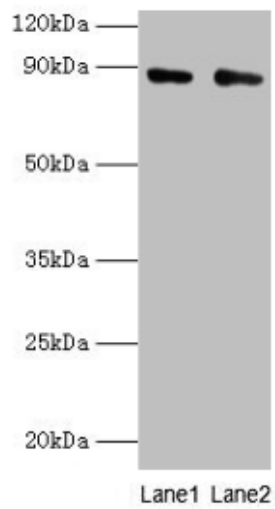
Recombinant Human Complement factor B protein (26-751AA).

**Storage:**

Preservative: 0.03% Proclin 300. Constituents: 50% Glycerol, 0.01M PBS, PH 7.4

## Product Images

---



### Western blot

All lanes: CFB antibody at 2 $\mu$ g/ml

Lane 1: K562 whole cell lysate

Lane 2: HepG2 whole cell lysate

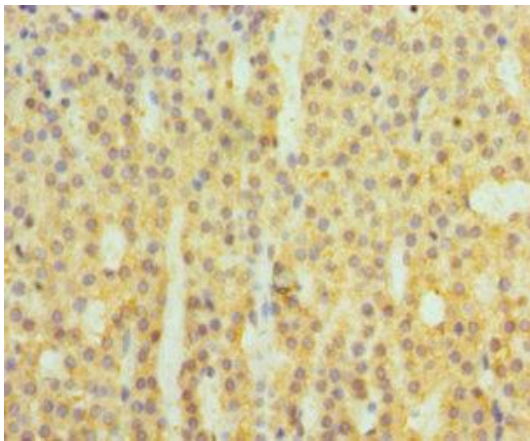
Secondary

Goat polyclonal to rabbit IgG at 1/10000 dilution

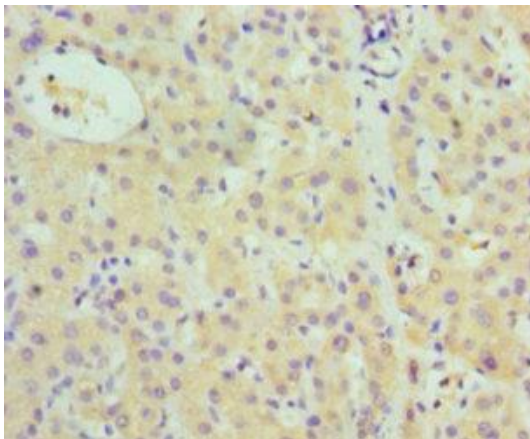
Predicted band size: 86, 69 kDa

Observed band size: 86 kDa

.



Immunohistochemistry of paraffin-embedded human adrenal gland tissue using PACO32948 at dilution of 1:100.



Immunohistochemistry of paraffin-embedded human liver cancer using PACO32948 at dilution of 1:100.