

AZGP1 Antibody



PACO32944

Product Information

Size:

50ug

Reactivity:

Human

Source:

Rabbit

Isotype:

IgG

Applications:

ELISA, WB, IHC

Recommended dilutions:

ELISA:1:2000-1:10000, WB:1:500-1:5000,
IHC:1:20-1:200

Protein Background:

Stimulates lipid degradation in adipocytes and causes the extensive fat losses associated with some advanced cancers. May bind polyunsaturated fatty acid, .

Gene ID:

AZGP1

Uniprot

P25311

Synonyms:

Zinc-alpha-2-glycoprotein (Zn-alpha-2-GP) (Zn-alpha-2-glycoprotein), AZGP1, ZAG
ZNGP1

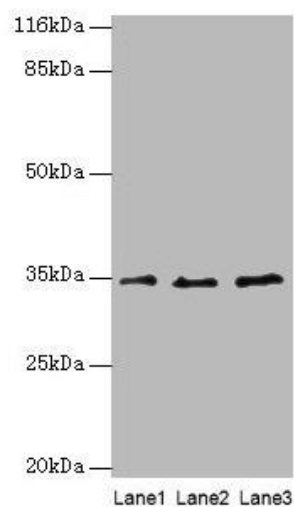
Immunogen:

Recombinant Human Zinc-alpha-2-glycoprotein protein (61-210AA).

Storage:

Preservative: 0.03% Proclin 300. Constituents: 50% Glycerol, 0.01M PBS, PH 7.4

Product Images



Western blot

All lanes: AZGP1 antibody at 4 μ g/ml

Lane 1: PC-3 whole cell lysate

Lane 2: HepG2 whole cell lysate

Lane 3: K562 whole cell lysate

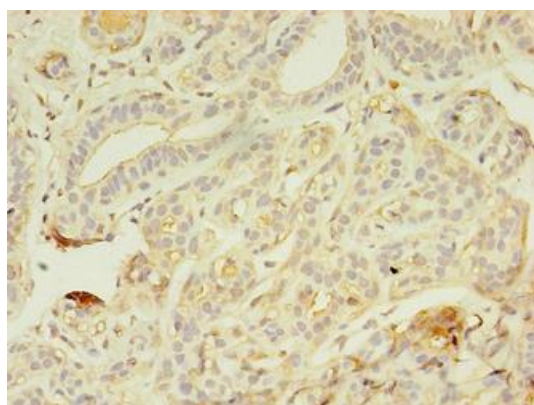
Secondary

Goat polyclonal to rabbit IgG at 1/10000 dilution

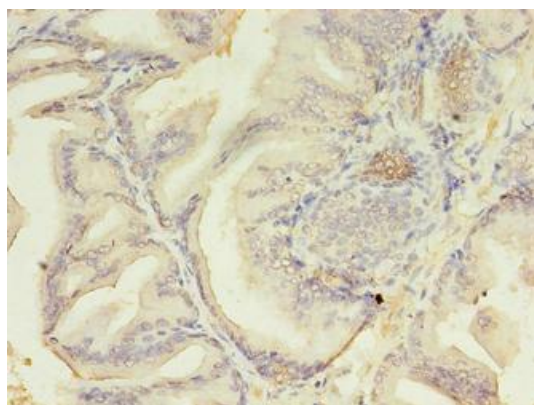
Predicted band size: 35 kDa

Observed band size: 35 kDa

.



Immunohistochemistry of paraffin-embedded human breast cancer using PACO32944 at dilution of 1:100.



Immunohistochemistry of paraffin-embedded human prostate cancer using PACO32944 at dilution of 1:100.