

ISG15 Antibody



PACO32736

Product Information

Size:

50ug

Reactivity:

Human

Source:

Rabbit

Isotype:

IgG

Applications:

ELISA, WB, IP

Recommended dilutions:

ELISA:1:2000-1:10000, WB:1:1000-1:5000,
IP:1:200-1:2000

Protein Background:**Gene ID:**

ISG15

Uniprot

P05161

Synonyms:

Ubiquitin-like protein ISG15 (Interferon-induced 15 kDa protein) (Interferon-induced 17 kDa protein) (IP17) (Ubiquitin cross-reactive protein) (hUCRP), ISG15, G1P2 UCRP

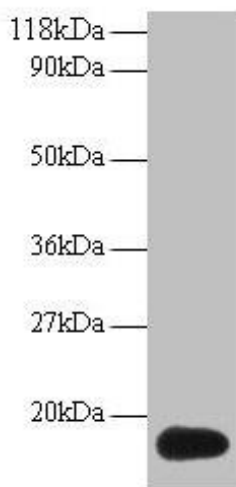
Immunogen:

Recombinant Human Ubiquitin-like protein ISG15 protein (2-157AA).

Storage:

Preservative: 0.03% Proclin 300. Constituents: 50% Glycerol, 0.01M PBS, PH 7.4

Product Images



Western blot

All lanes: ISG15 antibody at 2µg/ml + 293T whole cell lysate

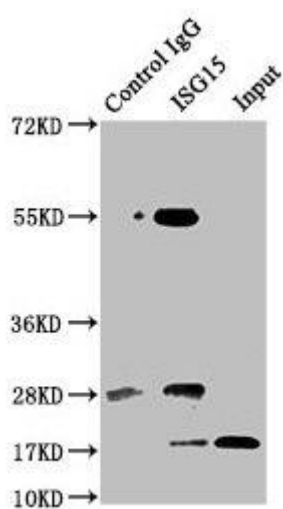
Secondary

Goat polyclonal to rabbit IgG at 1/15000 dilution

Predicted band size: 18 kDa

Observed band size: 18 kDa

.



Immunoprecipitating ISG15 in HeLa whole cell lysate

Lane 1: Rabbit control IgG instead of PACO32736 in HeLa whole cell lysate. For western blotting, a HRP-conjugated Protein G antibody was used as the secondary antibody (1/5000)

Lane 2: PACO32736 (8µg) + HeLa whole cell lysate (500µg)

Lane 3: HeLa whole cell lysate (20µg)

.