

PACO32624

Product Information

Size:

50ug

Reactivity:

Escherichia coli

Source:

Rabbit

Isotype:

IgG

Applications:

ELISA, WB

Recommended dilutions:

ELISA:1:2000-1:10000, WB:1:500-1:5000

Protein Background:

Belongs to the ribosomal protein S2P family.

Gene ID:

rpsB

Uniprot

P0A7V0

Synonyms:

30S ribosomal protein S2 (Small ribosomal subunit protein uS2), rpsB

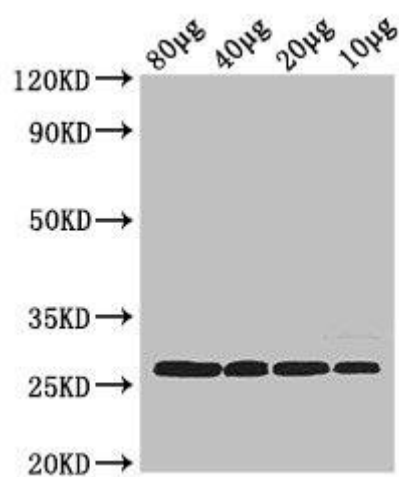
Immunogen:

Recombinant Escherichia coli 30S ribosomal protein S2 protein (2-241AA).

Storage:

Preservative: 0.03% Proclin 300. Constituents: 50% Glycerol, 0.01M PBS, PH 7.4

Product Images



Western Blot

Positive WB detected in: Rosseta bacteria lysate at 80µg, 40µg, 20µg, 10µg

All lanes: rpsB antibody at 2.5µg/ml

Secondary

Goat polyclonal to rabbit IgG at 1/50000 dilution

predicted band size: 27 kDa

observed band size: 27 kDa