

PACO32620

Product Information

Size:

50ug

Reactivity:

Escherichia coli

Source:

Rabbit

Isotype:

IgG

Applications:

ELISA, WB

Recommended dilutions:

ELISA:1:2000-1:10000, WB:1:500-1:5000

Protein Background:

Involved in the regulation of cellulose production. Cyclic-di-GMP is a second messenger which controls cell surface-associated traits in bacteria.

Gene ID:

dgcQ

Uniprot

P76330

Synonyms:

Probable diguanylate cyclase DgcQ (DGC) (EC 2.7.7.65) (Cellulose synthesis regulatory protein), dgcQ, yedQ

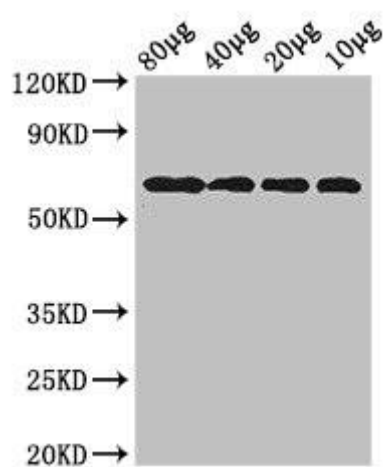
Immunogen:

Recombinant Escherichia coli Probable diguanylate cyclase DgcQ protein (381-564AA).

Storage:

Preservative: 0.03% Proclin 300. Constituents: 50% Glycerol, 0.01M PBS, PH 7.4

Product Images



Western Blot

Positive WB detected in: Rosseta bacteria lysate at 80µg, 40µg, 20µg, 10µg

All lanes: yedQ antibody at 2.5µg/ml

Secondary

Goat polyclonal to rabbit IgG at 1/50000 dilution

predicted band size: 65 kDa

observed band size: 65 kDa