

PACO32576

Product Information

Size:

50ug

Reactivity:

Human, Mouse

Source:

Rabbit

Isotype:

IgG

Applications:

ELISA, WB

Recommended dilutions:

ELISA:1:2000-1:10000, WB:1:1000-1:5000

Protein Background:

Calmodulin mediates the control of a large number of enzymes, ion channels, aquaporins and other proteins by Ca²⁺. Among the enzymes to be stimulated by the calmodulin-Ca²⁺ complex are a number of protein kinases and phosphatases. Together with CCP110 and centrin, is involved in a genetic pathway that regulates the centrosome cycle and progression through cytokinesis.

Gene ID:

CALM1

Uniprot

P62158

Synonyms:

Calmodulin-1, CALM1, CALM CAM CAM1

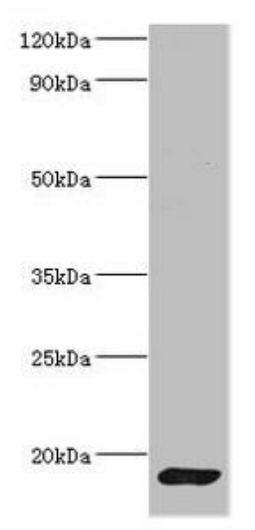
Immunogen:

Recombinant Human Calmodulin protein (2-149AA).

Storage:

Preservative: 0.03% Proclin 300. Constituents: 50% Glycerol, 0.01M PBS, PH 7.4

Product Images



Western blot

All lanes: CALM1 antibody at 2 μ g/ml + Mouse skeletal muscle tissue

Secondary

Goat polyclonal to rabbit IgG at 1/10000 dilution

Predicted band size: 17 kDa

Observed band size: 17 kDa