

PACO32484

---

## Product Information

**Size:**

50ug

**Reactivity:**

Human

**Source:**

Rabbit

**Isotype:**

IgG

**Applications:**

ELISA, WB, IHC

**Recommended dilutions:**

ELISA:1:2000-1:10000, WB:1:500-1:5000,  
IHC:1:20-1:200

**Protein Background:**

Calreticulin 3 is a calcium binding chaperone which promotes folding, oligomeric assembly and quality control in the ER via the calreticulin/calnexin cycle. This lectin may interact transiently with almost all of the monoglucosylated glycoproteins that are synthesized in the ER.

**Gene ID:**

CALR

**Uniprot**

P27797

**Synonyms:**

Calreticulin (CRP55) (Calregulin) (Endoplasmic reticulum resident protein 60) (ERp60) (HACBP) (grp60), CALR, CRTC

**Immunogen:**

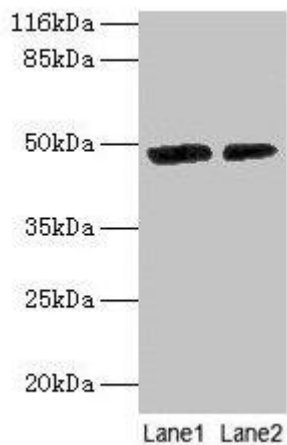
Recombinant Human Calreticulin protein (18-415AA).

**Storage:**

Preservative: 0.03% Proclin 300. Constituents: 50% Glycerol, 0.01M PBS, PH 7.4

## Product Images

---



### Western blot

All lanes: CALR antibody at 2 $\mu$ g/ml

Lane 1: EC109 whole cell lysate

Lane 2: 293T whole cell lysate

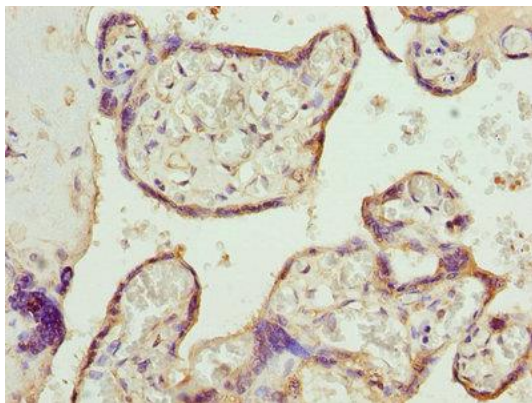
Secondary

Goat polyclonal to rabbit IgG at 1/10000 dilution

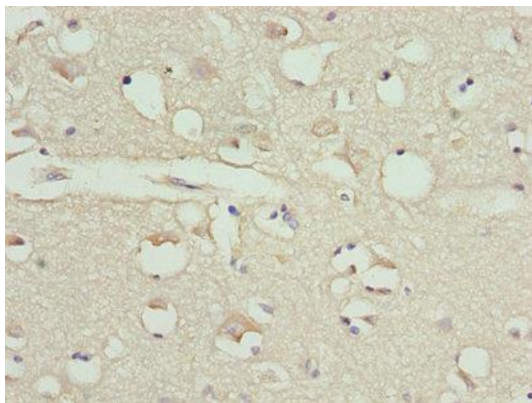
Predicted band size: 49 kDa

Observed band size: 49 kDa

.



Immunohistochemistry of paraffin-embedded human placenta tissue using PACO32484 at dilution of 1:100.



Immunohistochemistry of paraffin-embedded human brain tissue using PACO32484 at dilution of 1:100.