

PACO32436

Product Information

Size:

50ug

Reactivity:

Human

Source:

Rabbit

Isotype:

IgG

Applications:

ELISA, IHC

Recommended dilutions:

ELISA:1:2000-1:10000, IHC:1:20-1:200

Protein Background:

Chemotactic factor that attracts monocytes, lymphocytes, basophils and eosinophils. May play a role in neoplasia and inflammatory host responses. This protein can bind heparin. The processed form MCP-2(6-76) does not show monocyte chemotactic activity, but inhibits the chemotactic effect most predominantly of CCL7, and also of CCL2 and CCL5 and CCL8.

Gene ID:

CCL8

Uniprot

P80075

Synonyms:

C-C motif chemokine 8 (HC14) (Monocyte chemoattractant protein 2) (Monocyte chemotactic protein 2) (MCP-2) (Small-inducible cytokine A8) [Cleaved into: MCP-2(6-76)], CCL8, MCP2 SCYA10 SCYA8

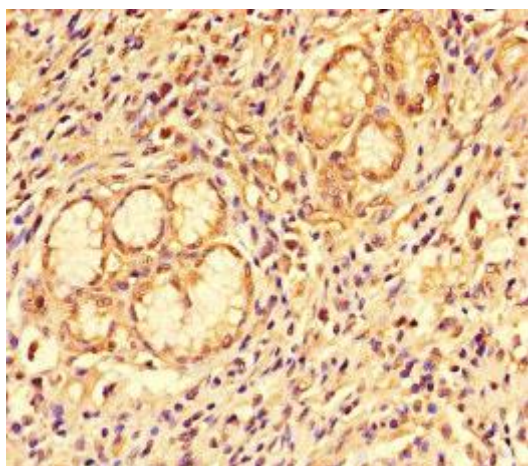
Immunogen:

Recombinant Human C-C motif chemokine 8 protein (24-99AA).

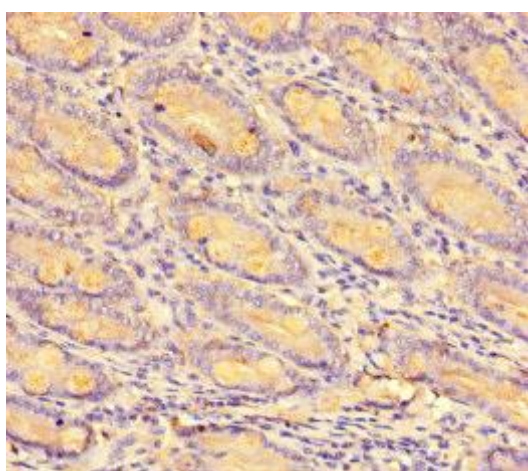
Storage:

Preservative: 0.03% Proclin 300. Constituents: 50% Glycerol, 0.01M PBS, PH 7.4

Product Images



Immunohistochemistry of paraffin-embedded human gastric cancer using PACO32436 at dilution of 1:100.



Immunohistochemistry of paraffin-embedded human small intestine tissue using PACO32436 at dilution of 1:100.