

PACO32428

---

## Product Information

**Size:**

50ug

**Reactivity:**

Human

**Source:**

Rabbit

**Isotype:**

IgG

**Applications:**

ELISA, WB, IHC

**Recommended dilutions:**

ELISA:1:2000-1:10000, WB:1:500-1:5000,  
IHC:1:20-1:200

**Protein Background:**

Inhibins and activins inhibit and activate, respectively, the secretion of follitropin by the pituitary gland. Inhibins/activins are involved in regulating a number of diverse functions such as hypothalamic and pituitary hormone secretion, gonadal hormone secretion, germ cell development and maturation, erythroid differentiation, insulin secretion, nerve cell survival, embryonic axial development or bone growth, depending on their subunit composition. Inhibins appear to oppose the functions of activins.

**Gene ID:**

INHBA

**Uniprot**

P08476

**Synonyms:**

Inhibin beta A chain (Activin beta-A chain) (Erythroid differentiation protein) (EDF),  
INHBA

**Immunogen:**

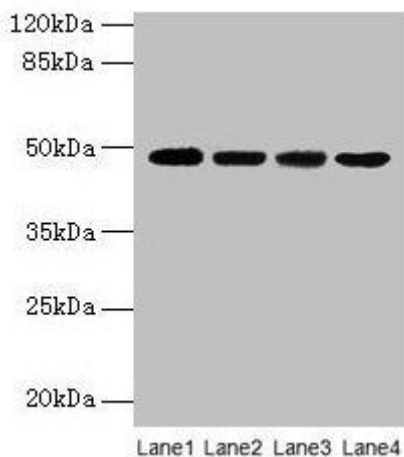
Recombinant Human Inhibin &beta; A chain protein (311-426AA).

**Storage:**

Preservative: 0.03% Proclin 300. Constituents: 50% Glycerol, 0.01M PBS, PH 7.4

## Product Images

---



### Western blot

All lanes: INHBA antibody at 2 $\mu$ g/ml

Lane 1: Hela whole cell lysate

Lane 2: HepG2 whole cell lysate

Lane 3: A549 whole cell lysate

Lane 4: MCF-7 whole cell lysate

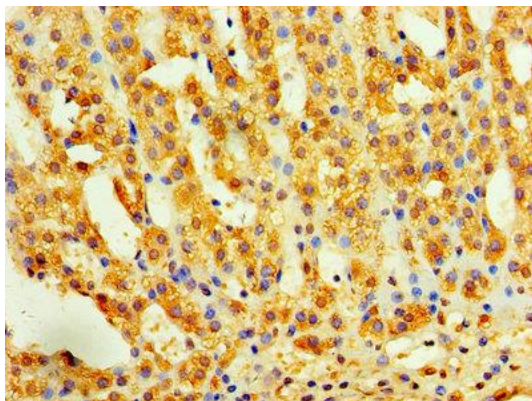
Secondary

Goat polyclonal to rabbit IgG at 1/10000 dilution

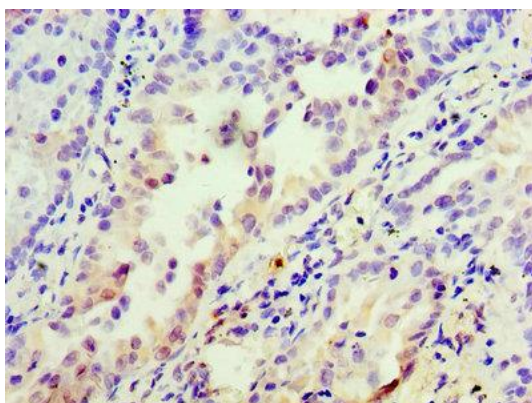
Predicted band size: 48 kDa

Observed band size: 48 kDa

.



Immunohistochemistry of paraffin-embedded human adrenal gland tissue using PACO32428 at dilution of 1:100.



Immunohistochemistry of paraffin-embedded human lung cancer using PACO32428 at dilution of 1:100.