

L1CAM Antibody



PACO32392

Product Information

Size:

50ug

Reactivity:

Human, Mouse

Source:

Rabbit

Isotype:

IgG

Applications:

ELISA, WB, IHC, IF

Recommended dilutions:

ELISA:1:2000-1:10000, WB:1:500-1:5000,
IHC:1:20-1:200, IF:1:50-1:200

Protein Background:

Cell adhesion molecule with an important role in the development of the nervous system. Involved in neuron-neuron adhesion, neurite fasciculation, outgrowth of neurites, etc. Binds to axonin on neurons.

Gene ID:

L1CAM

Uniprot

P32004

Synonyms:

Neural cell adhesion molecule L1 (N-CAM-L1) (NCAM-L1) (CD antigen CD171), L1CAM, CAML1 MIC5

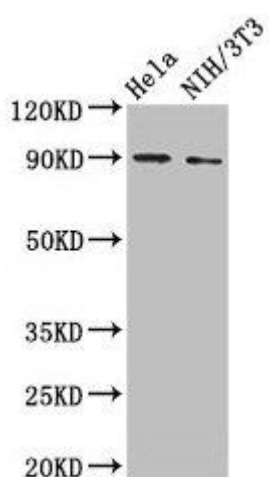
Immunogen:

Recombinant Human Neural cell adhesion molecule L1 protein (995-1119AA).

Storage:

Preservative: 0.03% Proclin 300. Constituents: 50% Glycerol, 0.01M PBS, PH 7.4

Product Images



Western Blot

Positive WB detected in: HeLa whole cell lysate, NIH/3T3 whole cell lysate

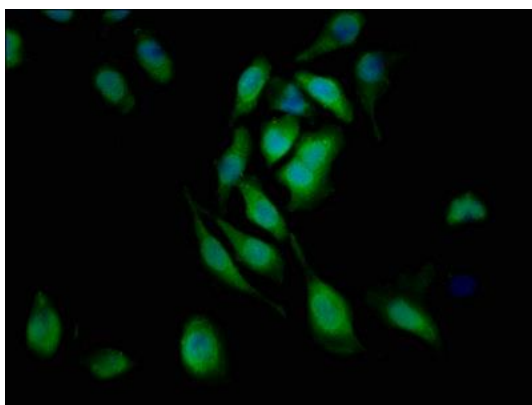
All lanes: L1CAM antibody at 2 μ g/ml

Secondary

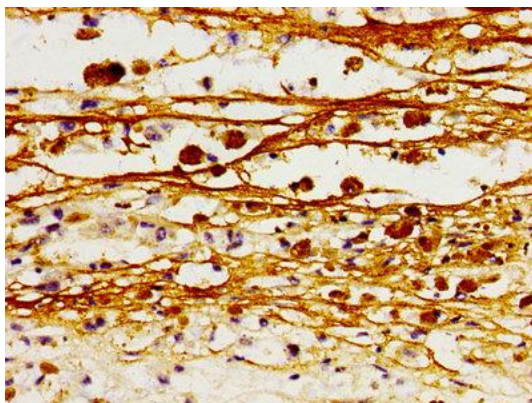
Goat polyclonal to rabbit IgG at 1/50000 dilution

Predicted band size: 141, 140, 139 kDa

Observed band size: 90 kDa



Immunofluorescent analysis of A549 cells using PACO32392 at dilution of 1:100 and Alexa Fluor 488-conjugated AffiniPure Goat Anti-Rabbit IgG(H+L).



Immunohistochemistry of paraffin-embedded human melanoma using PACO32392 at dilution of 1:100.