

PACO32372

Product Information

Size:

50ug

Reactivity:

Human, Mouse

Source:

Rabbit

Isotype:

IgG

Applications:

ELISA, WB, IHC

Recommended dilutions:

ELISA:1:2000-1:10000, WB:1:500-1:2000,
IHC:1:20-1:200

Protein Background:

TGF-beta 2 has suppressive effects on interleukin-2 dependent T-cell growth.

Gene ID:

TGFB2

Uniprot

P61812

Synonyms:

Transforming growth factor beta-2 (TGF-beta-2) (BSC-1 cell growth inhibitor) (Cetermin) (Glioblastoma-derived T-cell suppressor factor) (G-TSF) (Polyergin) [Cleaved into: Latency-associated peptide (LAP)], TGFB2

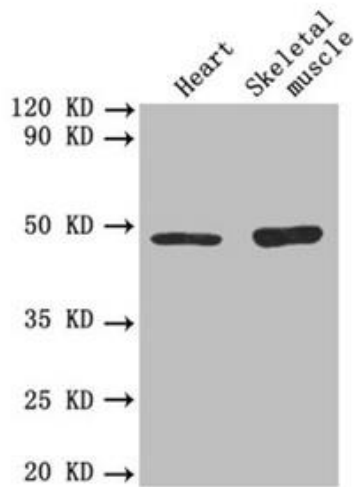
Immunogen:

Recombinant Human Transforming growth factor beta-2 proprotein protein (304-413AA).

Storage:

Preservative: 0.03% Proclin 300. Constituents: 50% Glycerol, 0.01M PBS, PH 7.4

Product Images



Western blot

All lanes: TGFB2 antibody at 3 μ g/ml

Lane 1: Mouse heart tissue

Lane 2: Mouse skeletal muscle tissue

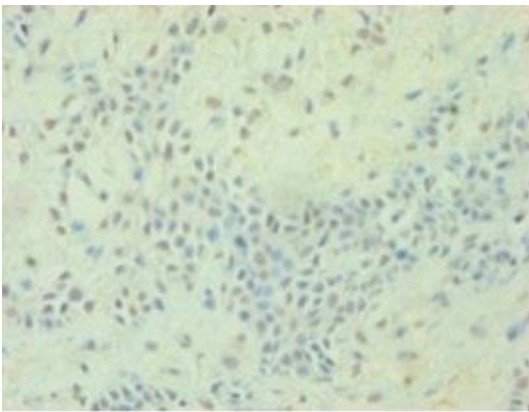
Secondary

Goat polyclonal to rabbit IgG at 1/10000 dilution

Predicted band size: 48, 51 kDa

Observed band size: 48 kDa

.



Immunohistochemistry of paraffin-embedded human breast cancer using PACO32372 at dilution of 1:100.