

PACO32368

---

## Product Information

**Size:**

50ug

**Reactivity:**

Human

**Source:**

Rabbit

**Isotype:**

IgG

**Applications:**

ELISA, IHC

**Recommended dilutions:**

ELISA:1:2000-1:10000, IHC:1:200-1:500

**Protein Background:**

TGF-beta 2 has suppressive effects on interleukin-2 dependent T-cell growth.

**Gene ID:**

TGFB2

**Uniprot**

P61812

**Synonyms:**

Transforming growth factor beta-2 (TGF-beta-2) (BSC-1 cell growth inhibitor) (Cetermin) (Glioblastoma-derived T-cell suppressor factor) (G-TSF) (Polyergin) [Cleaved into: Latency-associated peptide (LAP)], TGFB2

**Immunogen:**

Recombinant Human Transforming growth factor beta-2 proprotein protein (304-413AA).

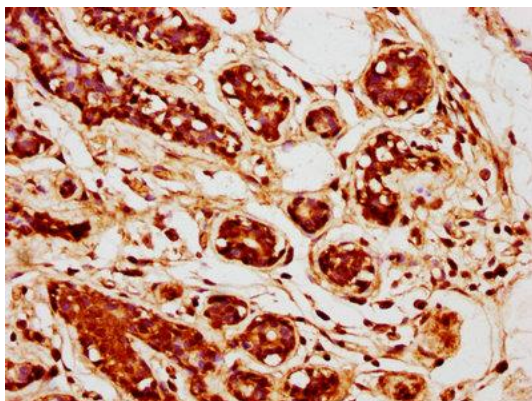
**Storage:**

Preservative: 0.03% Proclin 300. Constituents: 50% Glycerol, 0.01M PBS, PH 7.4

## Product Images

---

N/A



N/A

IHC image of PACO32368 diluted at 1:400 and staining in paraffin-embedded human breast cancer performed on a Leica Bond™ system. After dewaxing and hydration, antigen retrieval was mediated by high pressure in a citrate buffer (pH 6.0). Section was blocked with 10% normal goat serum 30min at RT. Then primary antibody (1% BSA) was incubated at 4°C overnight. The primary is detected by a biotinylated secondary antibody and visualized using an HRP conjugated SP system.