

PACO32360

Product Information

Size:

50ug

Reactivity:

Human

Source:

Rabbit

Isotype:

IgG

Applications:

ELISA, WB, IHC, IF

Recommended dilutions:

ELISA:1:2000-1:10000, WB:1:1000-1:5000,
IHC:1:20-1:200, IF:1:50-1:200

Protein Background:

Gene ID:

TGFA

Uniprot

P01135

Synonyms:

Protransforming growth factor alpha [Cleaved into: Transforming growth factor alpha (TGF-alpha) (EGF-like TGF) (ETGF) (TGF type 1)], TGFA

Immunogen:

Recombinant Human Protransforming growth factor α protein (40-89AA).

Storage:

Preservative: 0.03% Proclin 300. Constituents: 50% Glycerol, 0.01M PBS, PH 7.4

Product Images



Western blot

All lanes: TGFA antibody at 2 μ g/ml

Lane 1: EC109 whole cell lysate

Lane 2: 293T whole cell lysate

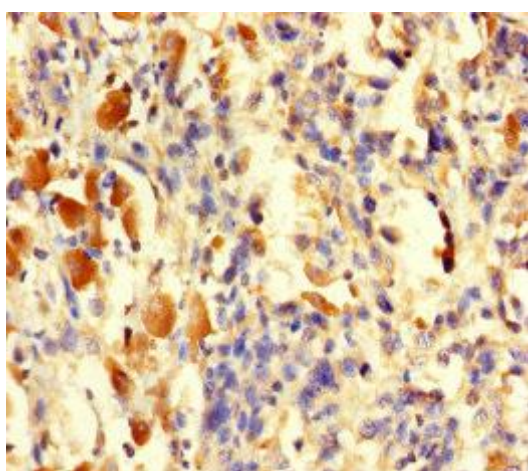
Secondary

Goat polyclonal to rabbit IgG at 1/15000 dilution

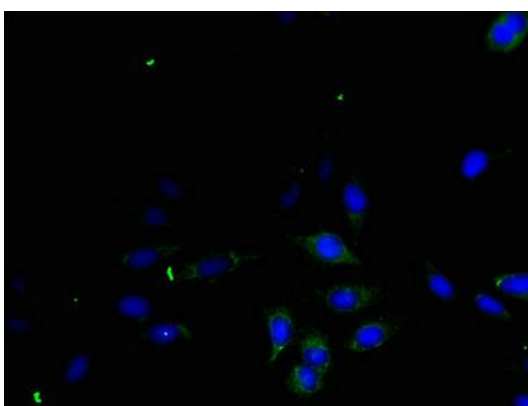
Predicted band size: 18, 17 kDa

Observed band size: 30, 35 kDa

.



Immunohistochemistry of paraffin-embedded human melanoma using PACO32360 at dilution of 1:100.



Immunofluorescent analysis of HeLa cells using PACO32360 at dilution of 1:100 and Alexa Fluor 488-conjugated AffiniPure Goat Anti-Rabbit IgG(H+L).