

Product Information

Size:

50ug

Reactivity:

Human

Source:

Rabbit

Isotype:

IgG

Applications:

ELISA, WB, IHC

Recommended dilutions:

ELISA:1:2000-1:10000, WB:1:1000-1:5000,
IHC:1:20-1:200

Protein Background:

Stimulates glucose uptake in differentiated adipocytes via the induction of glucose transporter SLC2A1/GLUT1 expression (but not SLC2A4/GLUT4 expression). Activity requires the presence of KLB.

Gene ID:

FGF21

Uniprot

Q9NSA1

Synonyms:

Fibroblast growth factor 21 (FGF-21), FGF21

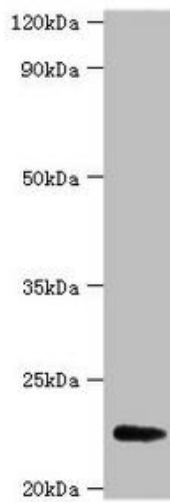
Immunogen:

Recombinant Human Fibroblast growth factor 21 protein (29-209AA).

Storage:

Preservative: 0.03% Proclin 300. Constituents: 50% Glycerol, 0.01M PBS, PH 7.4

Product Images



Western blot

All lanes: FGF21 antibody at 2 μ g/ml + A549 whole cell lysate

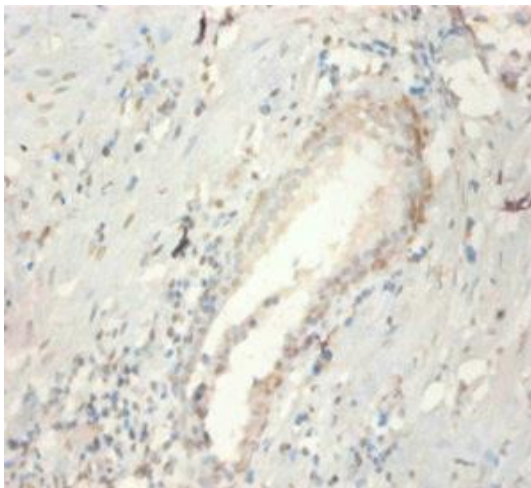
Secondary

Goat polyclonal to rabbit IgG at 1/15000 dilution

Predicted band size: 23 kDa

Observed band size: 23 kDa

.



Immunohistochemistry of paraffin-embedded human prostate tissue using PACO32176 at dilution of 1:100.