

CST3 Antibody



PACO32124

Product Information

Size:

50ug

Reactivity:

Human

Source:

Rabbit

Isotype:

IgG

Applications:

ELISA, WB, IHC

Recommended dilutions:

ELISA:1:2000-1:10000, WB:1:1000-1:5000,
IHC:1:20-1:200

Protein Background:

As an inhibitor of cysteine proteinases, this protein is thought to serve an important physiological role as a local regulator of this enzyme activity.

Gene ID:

CST3

Uniprot

P01034

Synonyms:

Cystatin-C (Cystatin-3) (Gamma-trace) (Neuroendocrine basic polypeptide) (Post-gamma-globulin), CST3

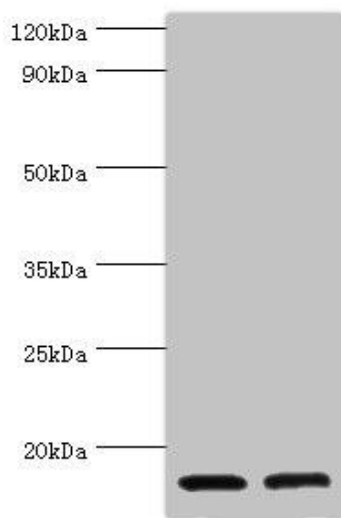
Immunogen:

Recombinant Human Cystatin-C protein (27-146AA).

Storage:

Preservative: 0.03% Proclin 300. Constituents: 50% Glycerol, 0.01M PBS, PH 7.4

Product Images



Western blot

All lanes: CST3 antibody at 2 μ g/ml

Lane 1: High values of serum at 1: 10

Lane 2: High values of serum at 1: 100

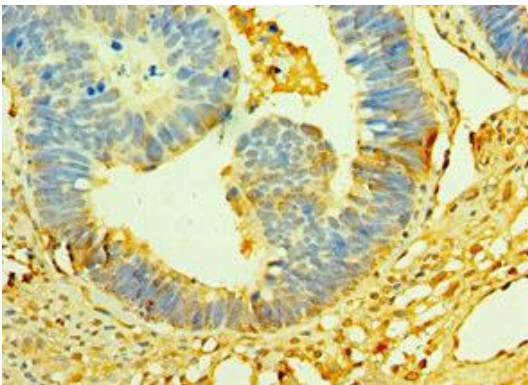
Secondary

Goat polyclonal to rabbit IgG at 1/10000 dilution

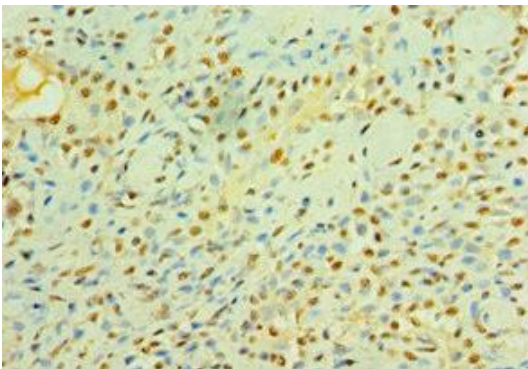
Predicted band size: 16 kDa

Observed band size: 16 kDa

.



Immunohistochemistry of paraffin-embedded human ovarian cancer using PACO32124 at dilution of 1:100.



Immunohistochemistry of paraffin-embedded human breast cancer using PACO32124 at dilution of 1:100.