

Product Information

Size:

50ug

Reactivity:

Human

Source:

Rabbit

Isotype:

IgG

Applications:

ELISA, IHC

Recommended dilutions:

ELISA:1:2000-1:10000, IHC:1:20-1:200

Protein Background:

Chemotactic for B-lymphocytes but not for T-lymphocytes, monocytes and neutrophils. Does not induce calcium release in B-lymphocytes.

Gene ID:

CXCL13

Uniprot

O43927

Synonyms:

C-X-C motif chemokine 13 (Angie) (B cell-attracting chemokine 1) (BCA-1) (B lymphocyte chemoattractant) (CXC chemokine BLC) (Small-inducible cytokine B13), CXCL13, BCA1 BLC SCYB13

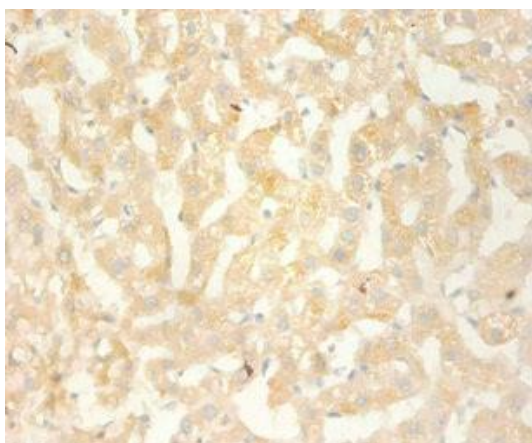
Immunogen:

Recombinant Human C-X-C motif chemokine 13 protein (23-95AA).

Storage:

Preservative: 0.03% Proclin 300. Constituents: 50% Glycerol, 0.01M PBS, PH 7.4

Product Images



Immunohistochemistry of paraffin-embedded human liver tissue using PACO32108 at dilution of 1:100.