

# CX3CL1 Antibody



PACO32096

---

## Product Information

**Size:**

50ug

**Reactivity:**

Human

**Source:**

Rabbit

**Isotype:**

IgG

**Applications:**

ELISA, IHC, IF

**Recommended dilutions:**

ELISA:1:2000-1:10000, IHC:1:20-1:200,  
IF:1:50-1:200

**Protein Background:**

The soluble form is chemotactic for T-cells and monocytes, but not for neutrophils. The membrane-bound form promotes adhesion of those leukocytes to endothelial cells. May play a role in regulating leukocyte adhesion and migration processes at the endothelium. Binds to CX3CR1.

**Gene ID:**

CX3CL1

**Uniprot**

P78423

**Synonyms:**

Fractalkine (C-X3-C motif chemokine 1) (CX3C membrane-anchored chemokine) (Neurotactin) (Small-inducible cytokine D1) [Cleaved into: Processed fractalkine], CX3CL1, FKN NTT SCYD1

**Immunogen:**

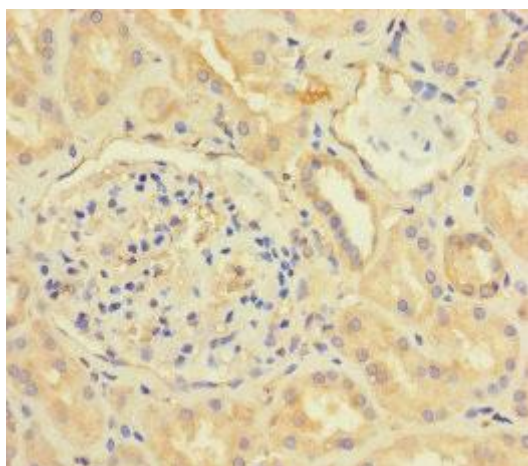
Recombinant Human Fractalkine protein (25-100AA).

**Storage:**

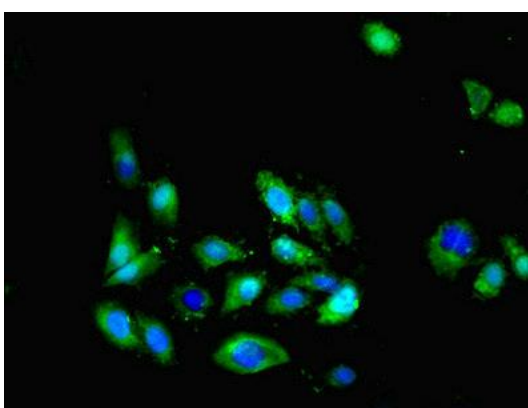
Preservative: 0.03% Proclin 300. Constituents: 50% Glycerol, 0.01M PBS, PH 7.4

## Product Images

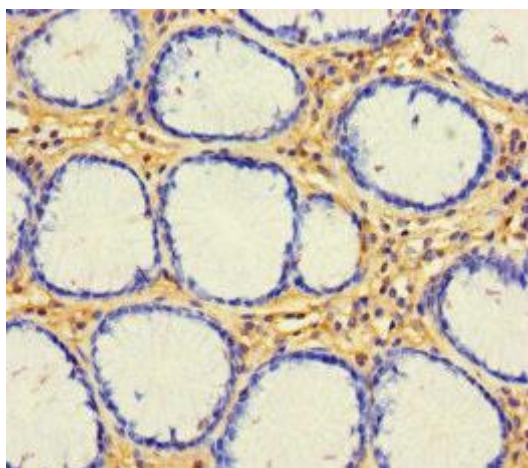
---



Immunohistochemistry of paraffin-embedded human kidney tissue using PACO32096 at dilution of 1:100.



Immunofluorescent analysis of HeLa cells using PACO32096 at dilution of 1:100 and Alexa Fluor 488-conjugated AffiniPure Goat Anti-Rabbit IgG(H+L).



Immunohistochemistry of paraffin-embedded human gastric cancer using PACO32096 at dilution of 1:100.