

IDH3B Antibody



PACO31988

Product Information

Size:

50ug

Reactivity:

Human, Mouse

Source:

Rabbit

Isotype:

IgG

Applications:

ELISA, WB

Recommended dilutions:

ELISA:1:2000-1:10000, WB:1:1000-1:5000

Protein Background:**Gene ID:**

IDH3B

Uniprot

O43837

Synonyms:

Isocitrate dehydrogenase [NAD] subunit beta, mitochondrial (Isocitric dehydrogenase subunit beta) (NAD(+)-specific ICDH subunit beta), IDH3B

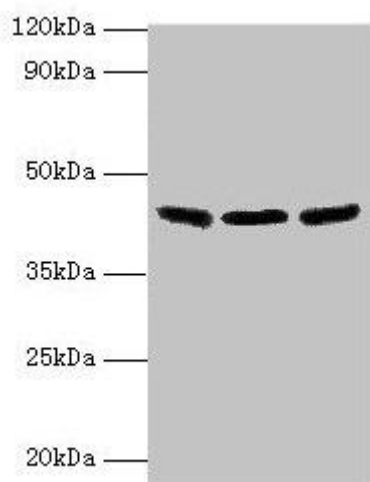
Immunogen:

Recombinant Human Isocitrate dehydrogenase [NAD] subunit beta, mitochondrial protein (35-385AA).

Storage:

Preservative: 0.03% Proclin 300. Constituents: 50% Glycerol, 0.01M PBS, PH 7.4

Product Images



Western blot

All lanes: IDH3B antibody at 2 μ g/ml

Lane 1: Hela whole cell lysate

Lane 2: Mouse kidney tissue

Lane 3: Mouse gonadal tissue

Secondary

Goat polyclonal to rabbit IgG at 1/10000 dilution

Predicted band size: 43, 42, 26 kDa

Observed band size: 43 kDa