

# C9orf16 Antibody



PACO31948

---

## Product Information

**Size:**

50ug

**Reactivity:**

Human

**Source:**

Rabbit

**Isotype:**

IgG

**Applications:**

ELISA, IHC

**Recommended dilutions:**

ELISA:1:2000-1:10000, IHC:1:20-1:200

**Protein Background:**

**Gene ID:**

C9orf16

**Uniprot**

Q9BUW7

**Synonyms:**

UPF0184 protein C9orf16, C9orf16

**Immunogen:**

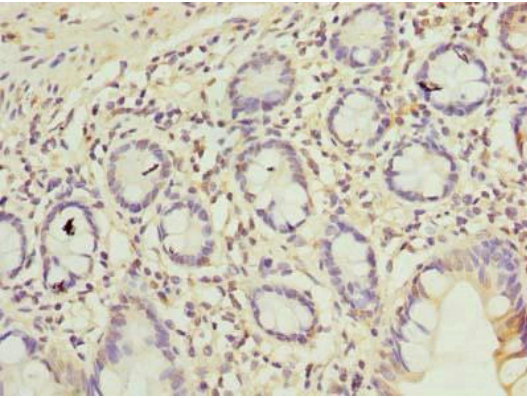
Recombinant Human UPF0184 protein C9orf16 protein (1-83AA).

**Storage:**

Preservative: 0.03% Proclin 300. Constituents: 50% Glycerol, 0.01M PBS, PH 7.4

## Product Images

---



Immunohistochemistry of paraffin-embedded human small intestine tissue using PACO31948 at dilution of 1:100.