

MYL6 Antibody



PACO31920

Product Information

Size:

50ug

Reactivity:

Human

Source:

Rabbit

Isotype:

IgG

Applications:

ELISA, IHC, IF

Recommended dilutions:

ELISA:1:2000-1:10000, IHC:1:20-1:200,
IF:1:50-1:200

Protein Background:

Regulatory light chain of myosin. Does not bind calcium.

Gene ID:

MYL6

Uniprot

P60660

Synonyms:

Myosin light polypeptide 6 (17 kDa myosin light chain) (LC17) (Myosin light chain 3) (MLC-3) (Myosin light chain alkali 3) (Myosin light chain A3) (Smooth muscle and nonmuscle myosin light chain alkali 6), MYL6

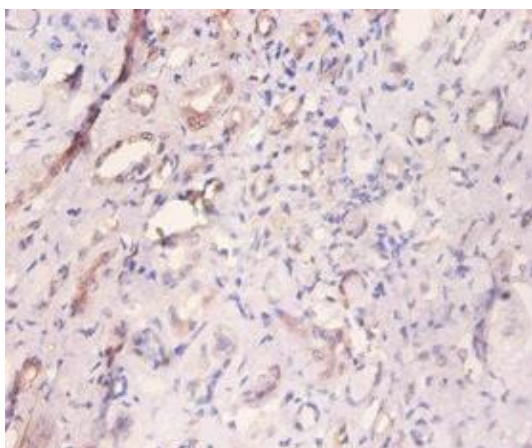
Immunogen:

Recombinant Human Myosin light polypeptide 6 protein (3-151AA).

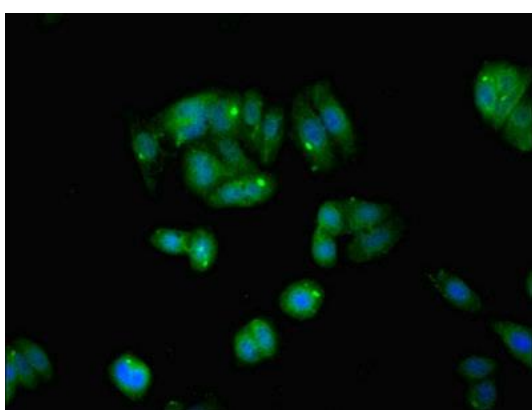
Storage:

Preservative: 0.03% Proclin 300. Constituents: 50% Glycerol, 0.01M PBS, PH 7.4

Product Images



Immunohistochemistry of paraffin-embedded human kidney tissue using PACO31920 at dilution of 1:100.



Immunofluorescent analysis of HepG2 cells using PACO31920 at dilution of 1:100 and Alexa Fluor 488-conjugated AffiniPure Goat Anti-Rabbit IgG(H+L).