

# LYPLA2 Antibody



PACO31900

---

## Product Information

**Size:**

50ug

**Reactivity:**

Human

**Source:**

Rabbit

**Isotype:**

IgG

**Applications:**

ELISA, IF

**Recommended dilutions:**

ELISA:1:2000-1:10000, IF:1:50-1:200

**Protein Background:**

**Gene ID:**

LYPLA2

**Uniprot**

O95372

**Synonyms:**

Acyl-protein thioesterase 2 (APT-2) (EC 3.1.2. -) (Lysophospholipase II) (LPL-II) (LysoPLA II), LYPLA2, APT2

**Immunogen:**

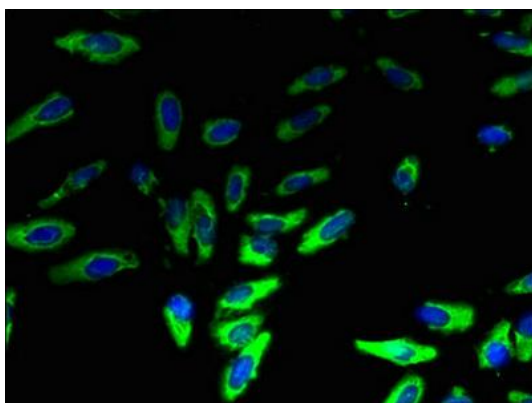
Recombinant Human Acyl-protein thioesterase 2 protein (1-226AA).

**Storage:**

Preservative: 0.03% Proclin 300. Constituents: 50% Glycerol, 0.01M PBS, PH 7.4

## Product Images

---



Immunofluorescent analysis of HeLa cells using PACO31900 at dilution of 1:100 and Alexa Fluor 488-conjugated AffiniPure Goat Anti-Rabbit IgG(H+L).