

PACO31892

Product Information

Size:

50ug

Reactivity:

Human

Source:

Rabbit

Isotype:

IgG

Applications:

ELISA, WB, IHC

Recommended dilutions:

ELISA:1:2000-1:10000, WB:1:1000-1:5000,
IHC:1:20-1:200

Protein Background:

Positive regulator of neurite outgrowth by stabilizing myosin regulatory light chain (MRLC). It prevents MIR-mediated MRLC ubiquitination and its subsequent proteasomal degradation.

Gene ID:

CNPY2

Uniprot

Q9Y2B0

Synonyms:

Protein canopy homolog 2 (MIR-interacting saposin-like protein) (Putative secreted protein Zsig9) (Transmembrane protein 4), CNPY2, MSAP TMEM4 ZSIG9

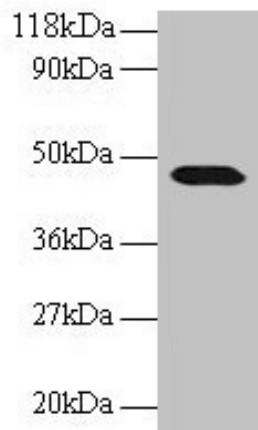
Immunogen:

Recombinant Human Protein canopy homolog 2 protein (22-182AA).

Storage:

Preservative: 0.03% Proclin 300. Constituents: 50% Glycerol, 0.01M PBS, PH 7.4

Product Images



Western blot

All lanes: CNPY2 antibody at 2 μ g/ml + 293T whole cell lysate

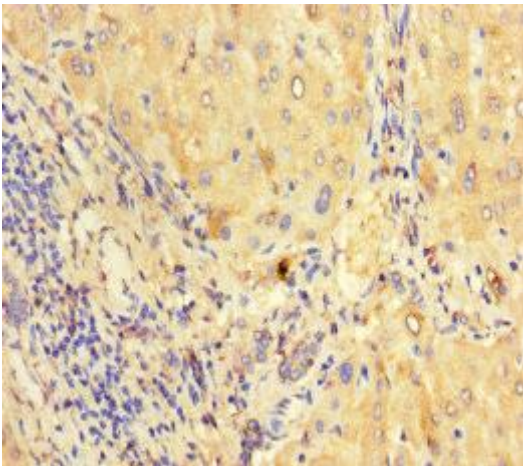
Secondary

Goat polyclonal to rabbit IgG at 1/15000 dilution

Predicted band size: 21, 10 kDa

Observed band size: 47 kDa

.



Immunohistochemistry of paraffin-embedded human liver tissue using PACO31892 at dilution of 1:100.