

PACO31864

Product Information

Size:

50ug

Reactivity:

Human

Source:

Rabbit

Isotype:

IgG

Applications:

ELISA, WB, IHC

Recommended dilutions:

ELISA:1:2000-1:10000, WB:1:1000-1:5000,
IHC:1:20-1:200

Protein Background:**Gene ID:**

UQCRFS1

Uniprot

P47985

Synonyms:

Cytochrome b-c1 complex subunit Rieske, mitochondrial (EC 1.10.2.2) (Complex III subunit 5) (Cytochrome b-c1 complex subunit 5) (Rieske iron-sulfur protein) (RISP) (Rieske protein UQCRFS1) (Ubiquinol-cytochrome c reductase iron-sulfur subunit) [Cleaved into: Cytochrome b-c1 complex subunit 9 (Su9) (Subunit 9) (8 kDa subunit 9) (Complex III subunit IX) (Cytochrome b-c1 complex subunit 11) (Ubiquinol-cytochrome c reductase 8 kDa protein)], UQCRFS1

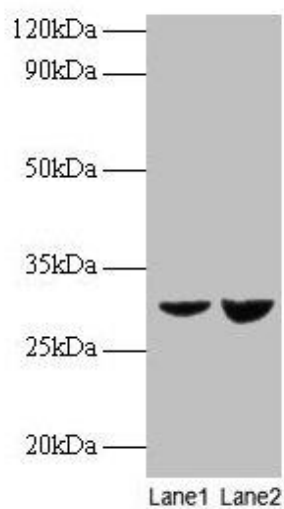
Immunogen:

Recombinant Human Cytochrome b-c1 complex subunit Rieske, mitochondrial protein (79-274AA).

Storage:

Preservative: 0.03% Proclin 300. Constituents: 50% Glycerol, 0.01M PBS, PH 7.4

Product Images



Western blot

All lanes: UQCRFS1 antibody at 2 μ g/ml

Lane 1: EC109 whole cell lysate

Lane 2: 293T whole cell lysate

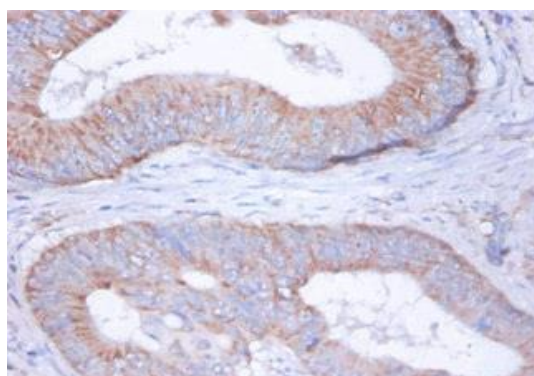
Secondary

Goat polyclonal to rabbit IgG at 1/15000 dilution

Predicted band size: 30 kDa

Observed band size: 30 kDa

.



Immunohistochemistry of paraffin-embedded human colon cancer using PACO31864 at dilution of 1:100.