

GTPBP6 Antibody



PACO31840

Product Information

Size:

50ug

Reactivity:

Human

Source:

Rabbit

Isotype:

IgG

Applications:

ELISA, WB, IHC

Recommended dilutions:

ELISA:1:2000-1:10000, WB:1:500-1:2000,
IHC:1:20-1:200

Protein Background:

Gene ID:

GTPBP6

Uniprot

O43824

Synonyms:

Putative GTP-binding protein 6 (Pseudoautosomal GTP-binding protein-like), GTPBP6, PGPL

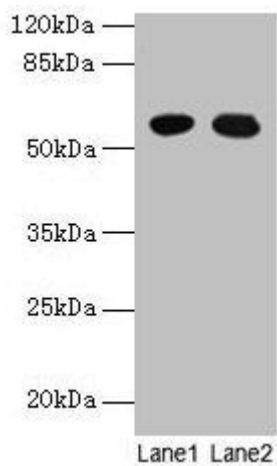
Immunogen:

Recombinant Human Putative GTP-binding protein 6 protein (146-295AA).

Storage:

Preservative: 0.03% Proclin 300. Constituents: 50% Glycerol, 0.01M PBS, PH 7.4

Product Images



Western blot

All lanes: GTPBP6 antibody at 6 μ g/ml

Lane 1: A549 whole cell lysate

Lane 2: Hela whole cell lysate

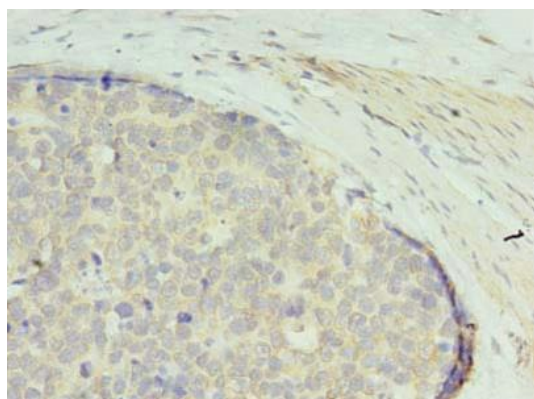
Secondary

Goat polyclonal to rabbit IgG at 1/10000 dilution

Predicted band size: 57 kDa

Observed band size: 57 kDa

.



Immunohistochemistry of paraffin-embedded human gastric cancer using PACO31840 at dilution of 1:100.