

# SLC6A7 Antibody



PACO31816

---

## Product Information

**Size:**

50ug

**Reactivity:**

Human

**Source:**

Rabbit

**Isotype:**

IgG

**Applications:**

ELISA, IHC

**Recommended dilutions:**

ELISA:1:2000-1:10000, IHC:1:20-1:200

**Protein Background:**

Terminates the action of proline by its high affinity sodium-dependent reuptake into presynaptic terminals.

**Gene ID:**

SLC6A7

**Uniprot**

Q99884

**Synonyms:**

Sodium-dependent proline transporter (Solute carrier family 6 member 7), SLC6A7, PROT

**Immunogen:**

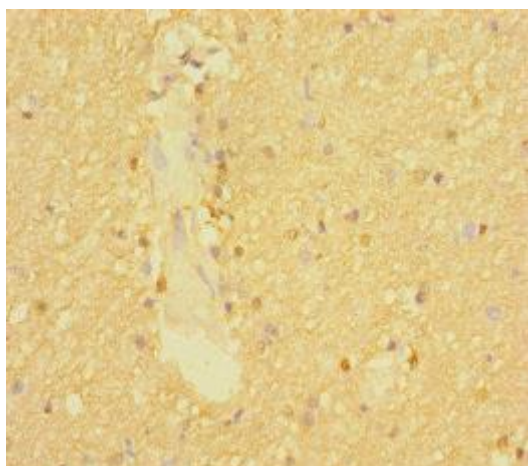
Recombinant Human Sodium-dependent proline transporter protein (557-636AA).

**Storage:**

Preservative: 0.03% Proclin 300. Constituents: 50% Glycerol, 0.01M PBS, PH 7.4

## Product Images

---



Immunohistochemistry of paraffin-embedded human brain tissue using PACO31816 at dilution of 1:100.