

AFG3L2 Antibody



PACO31796

Product Information

Size:

50ug

Reactivity:

Human

Source:

Rabbit

Isotype:

IgG

Applications:

ELISA, WB, IHC

Recommended dilutions:

ELISA:1:2000-1:10000, WB:1:1000-1:5000,
IHC:1:20-1:200

Protein Background:

ATP-dependent protease which is essential for axonal and neuron development. In neurons, mediates degradation of SMDT1/EMRE before its assembly with the uniporter complex, limiting the availability of SMDT1/EMRE for MCU assembly and promoting efficient assembly of gatekeeper subunits with MCU. Required for the maturation of paraplegin (SPG7) after its cleavage by mitochondrial-processing peptidase (MPP), converting it into a proteolytically active mature form.

Gene ID:

AFG3L2

Uniprot

Q9Y4W6

Synonyms:

AFG3-like protein 2 (EC 3.4.24. -) (Paraplegin-like protein), AFG3L2

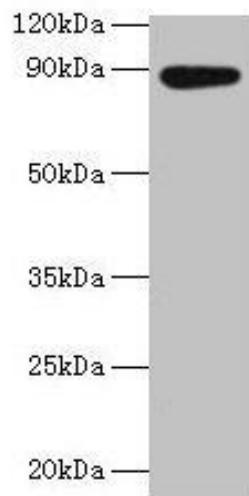
Immunogen:

Recombinant Human AFG3-like protein 2 protein (550-759AA).

Storage:

Preservative: 0.03% Proclin 300. Constituents: 50% Glycerol, 0.01M PBS, PH 7.4

Product Images



Western blot

All lanes: AFG3L2 antibody at 2 μ g/ml + EC109 whole cell lysate

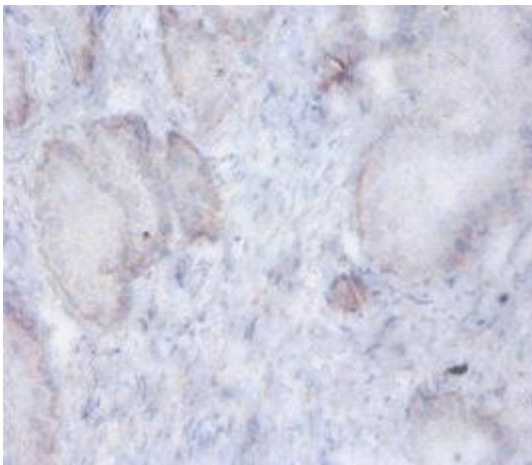
Secondary

Goat polyclonal to rabbit IgG at 1/15000 dilution

Predicted band size: 89 kDa

Observed band size: 89 kDa

.



Immunohistochemistry of paraffin-embedded human prostate tissue using PACO31796 at dilution of 1:100.