

Product Information

Size:

50ug

Reactivity:

Human

Source:

Rabbit

Isotype:

IgG

Applications:

ELISA, WB

Recommended dilutions:

ELISA:1:2000-1:10000, WB:1:1000-1:5000

Protein Background:

This is a component of the ubiquinol-cytochrome c reductase complex (complex III or cytochrome b-c1 complex), which is part of the mitochondrial respiratory chain. This subunit, together with cytochrome b, binds to ubiquinone.

Gene ID:

UQCRQ

Uniprot

O14949

Synonyms:

Cytochrome b-c1 complex subunit 8 (Complex III subunit 8) (Complex III subunit VIII) (Ubiquinol-cytochrome c reductase complex 9.5 kDa protein) (Ubiquinol-cytochrome c reductase complex ubiquinone-binding protein QP-C), UQCRQ

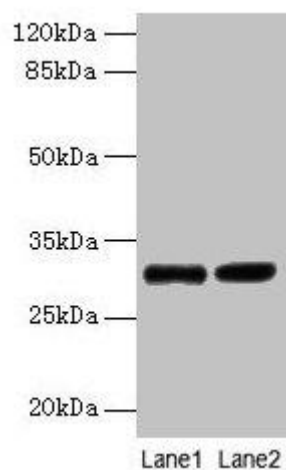
Immunogen:

Recombinant Human Cytochrome b-c1 complex subunit 8 protein (2-78AA).

Storage:

Preservative: 0.03% Proclin 300. Constituents: 50% Glycerol, 0.01M PBS, PH 7.4

Product Images



Western blot

All lanes: UQCRQ antibody at 2 μ g/ml

Lane 1: EC109 whole cell lysate

Lane 2: 293T whole cell lysate

Secondary

Goat polyclonal to rabbit IgG at 1/15000 dilution

Predicted band size: 10 kDa

Observed band size: 30 kDa

.