

Product Information

Size:

50ug

Reactivity:

Human

Source:

Rabbit

Isotype:

IgG

Applications:

ELISA, IF

Recommended dilutions:

ELISA:1:2000-1:10000, IF:1:50-1:200

Protein Background:

This is a component of the ubiquinol-cytochrome c reductase complex (complex III or cytochrome b-c1 complex), which is part of the mitochondrial respiratory chain. This protein may be closely linked to the iron-sulfur protein in the complex and function as an iron-sulfur protein binding factor.

Gene ID:

UQCR11

Uniprot

O14957

Synonyms:

Cytochrome b-c1 complex subunit 10 (Complex III subunit 10) (Complex III subunit XI) (Ubiquinol-cytochrome c reductase complex 6.4 kDa protein), UQCR11, UQCR

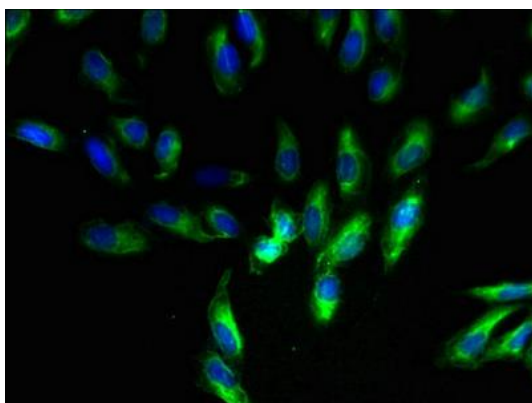
Immunogen:

Recombinant Human Cytochrome b-c1 complex subunit 10 protein (1-56AA).

Storage:

Preservative: 0.03% Proclin 300. Constituents: 50% Glycerol, 0.01M PBS, PH 7.4

Product Images



Immunofluorescent analysis of HeLa cells using PACO31752 at dilution of 1:100 and Alexa Fluor 488-conjugated AffiniPure Goat Anti-Rabbit IgG(H+L).