

## Product Information

**Size:**

50ug

**Reactivity:**

Human

**Source:**

Rabbit

**Isotype:**

IgG

**Applications:**

ELISA, WB, IHC

**Recommended dilutions:**

ELISA:1:2000-1:10000, WB:1:1000-1:5000,  
IHC:1:20-1:200

**Protein Background:**

Multiubiquitin chain receptor involved in modulation of proteasomal degradation. Binds to 'Lys-48'-linked polyubiquitin chains in a length-dependent manner and with a lower affinity to 'Lys-63'-linked polyubiquitin chains. Proposed to be capable to bind simultaneously to the 26S proteasome and to polyubiquitinated substrates and to deliver ubiquitinated proteins to the proteasome. Involved in nucleotide excision repair and is thought to be functional equivalent for RAD23B in global genome nucleotide excision repair (GG-NER) by association with XPC. In vitro, the XPC: RAD23A dimer has NER activity. Can stabilize XPC. (Microbial infection) Involved in Vpr-dependent replication of HIV-1 in non-proliferating cells and primary macrophages. Required for the association of HIV-1 Vpr with the host proteasome.

**Gene ID:**

RAD23A

**Uniprot**

P54725

**Synonyms:**

UV excision repair protein RAD23 homolog A (HR23A) (hHR23A), RAD23A

**Immunogen:**

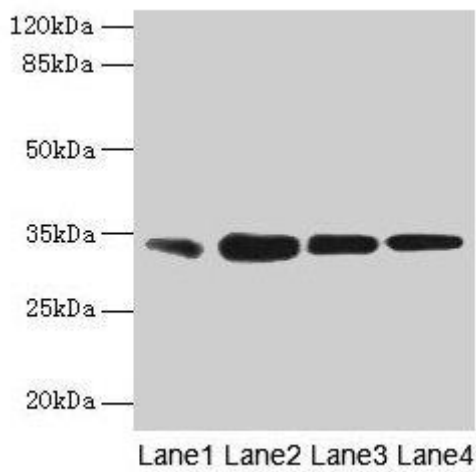
Recombinant Human UV excision repair protein RAD23 homolog A protein (2-201AA).

**Storage:**

Preservative: 0.03% Proclin 300. Constituents: 50% Glycerol, 0.01M PBS, PH 7.4

## Product Images

---



### Western blot

All lanes: RAD23A antibody at 3 $\mu$ g/ml

Lane 1: MCF-7 whole cell lysate

Lane 2: HeLa whole cell lysate

Lane 3: Raji whole cell lysate

Lane 4: Jurkat whole cell lysate

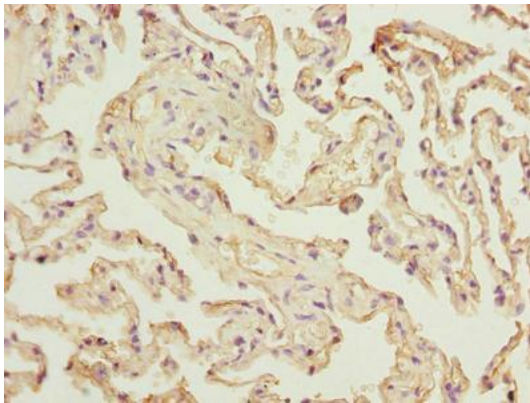
Secondary

Goat polyclonal to rabbit IgG at 1/10000 dilution

Predicted band size: 40, 34 kDa

Observed band size: 34 kDa

.



Immunohistochemistry of paraffin-embedded human lung tissue using PACO31748 at dilution of 1:100.