

Product Information

Size:

50ug

Reactivity:

Human

Source:

Rabbit

Isotype:

IgG

Applications:

ELISA, WB, IHC, IF

Recommended dilutions:

ELISA:1:2000-1:10000, WB:1:500-1:2000,
IHC:1:20-1:200, IF:1:50-1:200

Protein Background:

Glycosyltransferase which regulates the biosynthesis of heparan sulfate (HS). Important for both skeletal development and hematopoiesis, through the formation of HS proteoglycans (HSPGs). Required for the function of REG3A in regulating keratinocyte proliferation and differentiation.

Gene ID:

EXTL3

Uniprot

O43909

Synonyms:

Exostosin-like 3 (EC 2.4.1.223) (EXT-related protein 1) (Glucuronyl-galactosyl-proteoglycan 4-alpha-N-acetylglucosaminyltransferase) (Hereditary multiple exostoses gene isolog) (Multiple exostosis-like protein 3) (Putative tumor suppressor protein EXTL3), EXTL3, EXTL1L EXTR1 KIAA0519

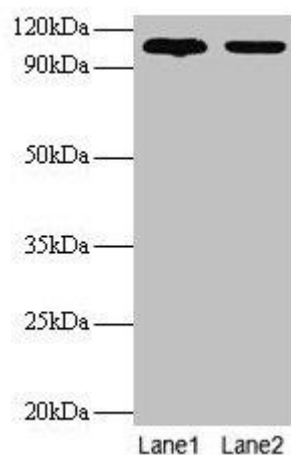
Immunogen:

Recombinant Human Exostosin-like 3 protein (2-245AA).

Storage:

Preservative: 0.03% Proclin 300. Constituents: 50% Glycerol, 0.01M PBS, PH 7.4

Product Images



Western blot

All lanes: EXTL3 antibody at 2 μ g/ml

Lane 1: EC109 whole cell lysate

Lane 2: 293T whole cell lysate

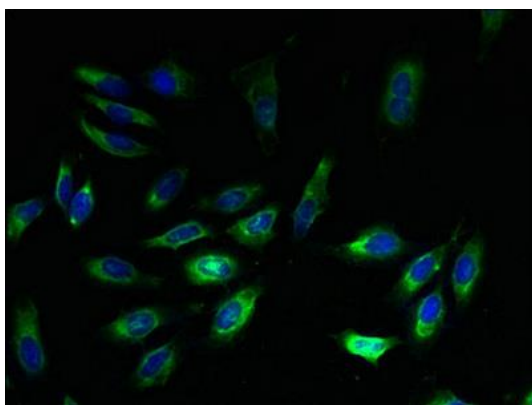
Secondary

Goat polyclonal to rabbit IgG at 1/15000 dilution

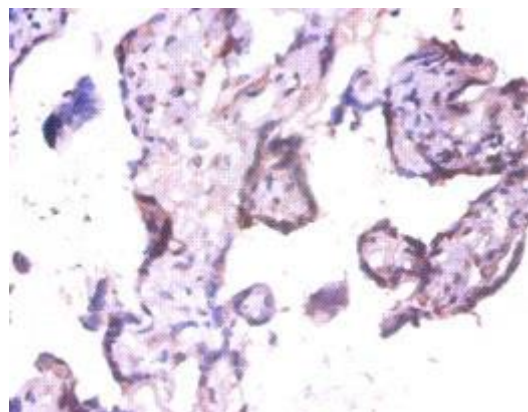
Predicted band size: 105 kDa

Observed band size: 105 kDa

.



Immunofluorescent analysis of HeLa cells using PACO31612 at dilution of 1:100 and Alexa Fluor 488-conjugated AffiniPure Goat Anti-Rabbit IgG(H+L).



Immunohistochemistry of paraffin-embedded human placenta tissue using PACO31612 at dilution of 1:100.