

Product Information

Size:

50ug

Reactivity:

Human, Mouse

Source:

Rabbit

Isotype:

IgG

Applications:

ELISA, WB, IHC, IF

Recommended dilutions:

ELISA:1:2000-1:10000, WB:1:1000-1:5000,
IHC:1:20-1:200, IF:1:50-1:200

Protein Background:

Catalyzes the irreversible transamination of the L-tryptophan metabolite L-kynurenine to form kynurenic acid, (KA). Plays a key role in amino acid, metabolism. Important for metabolite exchange between mitochondria and cytosol. Facilitates cellular uptake of long-chain free fatty acid, .

Gene ID:

GOT2

Uniprot

P00505

Synonyms:

Aspartate aminotransferase, mitochondrial (mAspAT) (EC 2.6.1.1) (EC 2.6.1.7) (Fatty acid, binding protein) (FABP-1) (Glutamate oxaloacetate transaminase 2) (Kynurenine aminotransferase 4) (Kynurenine aminotransferase IV) (Kynurenine--oxoglutarate transaminase 4) (Kynurenine--oxoglutarate transaminase IV) (Plasma membrane-associated fatty acid, binding protein) (FABPpm) (Transaminase A), GOT2

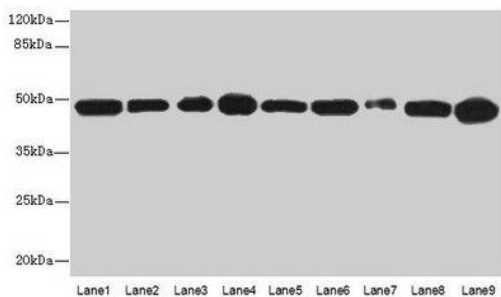
Immunogen:

Recombinant Human Aspartate aminotransferase, mitochondrial protein (33-279AA).

Storage:

Preservative: 0.03% Proclin 300. Constituents: 50% Glycerol, 0.01M PBS, PH 7.4

Product Images



Western blot

All lanes: GOT2 antibody at 3 μ g/ml

Lane 1: A431 whole cell lysate
Lane 2: HepG2 whole cell lysate

Lane 3: Mouse muscle tissue

Lane 4: Mouse spleen tissue

Lane 5: MCF-7 whole cell lysate

Lane 6: Hela whole cell lysate

Lane 7: LO2 whole cell lysate

Lane 8: 293T whole cell lysate

Lane 9: HL60 whole cell lysate

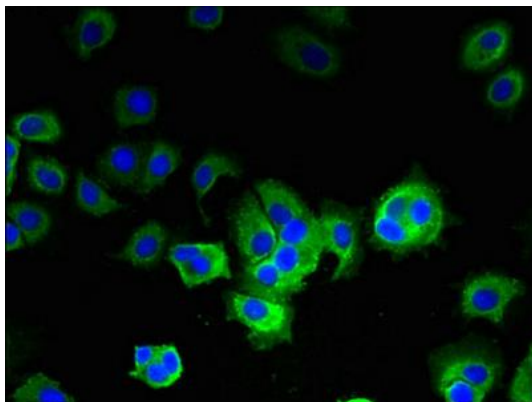
Secondary

Goat polyclonal to rabbit IgG at 1/10000 dilution

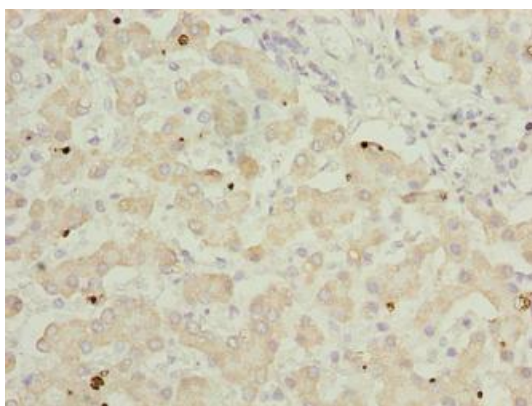
Predicted band size: 48, 44 kDa

Observed band size: 48 kDa

.



Immunofluorescent analysis of MCF-7 cells using PACO31608 at dilution of 1:100 and Alexa Fluor 488-conjugated AffiniPure Goat Anti-Rabbit IgG(H+L).



Immunohistochemistry of paraffin-embedded human liver tissue using PACO31608 at dilution of 1:100.