

# SEC61G Antibody



PACO31604

---

## Product Information

**Size:**

50ug

**Reactivity:**

Human

**Source:**

Rabbit

**Isotype:**

IgG

**Applications:**

ELISA, IHC

**Recommended dilutions:**

ELISA:1:2000-1:10000, IHC:1:20-1:200

**Protein Background:**

Component of SEC61 channel-forming translocon complex that mediates transport of signal peptide-containing precursor polypeptides across endoplasmic reticulum (ER).

**Gene ID:**

SEC61G

**Uniprot**

P60059

**Synonyms:**

Protein transport protein Sec61 subunit gamma, SEC61G

**Immunogen:**

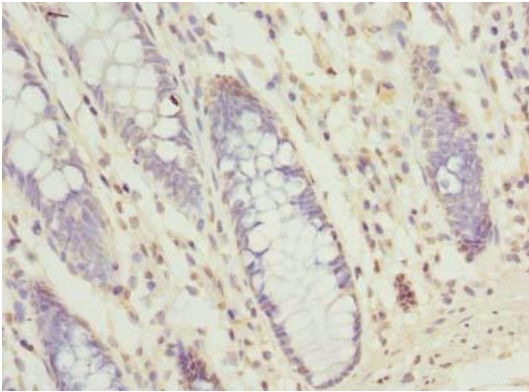
Recombinant Human Protein transport protein Sec61 subunit &gamma; protein (1-32AA).

**Storage:**

Preservative: 0.03% Proclin 300. Constituents: 50% Glycerol, 0.01M PBS, PH 7.4

## Product Images

---



Immunohistochemistry of paraffin-embedded human colon cancer using PACO31604 at dilution of 1:100.