

PACO31588

---

## Product Information

**Size:**

50ug

**Reactivity:**

Human

**Source:**

Rabbit

**Isotype:**

IgG

**Applications:**

ELISA, IHC

**Recommended dilutions:**

ELISA:1:2000-1:10000, IHC:1:20-1:200

**Protein Background:**

Accessory subunit of the mitochondrial membrane respiratory chain NADH dehydrogenase (Complex I), that is believed not to be involved in catalysis. Complex I functions in the transfer of electrons from NADH to the respiratory chain. The immediate electron acceptor for the enzyme is believed to be ubiquinone.

**Gene ID:**

NDUFA2

**Uniprot**

O43678

**Synonyms:**

NADH dehydrogenase [ubiquinone] 1 alpha subcomplex subunit 2 (Complex I-B8) (CI-B8) (NADH-ubiquinone oxidoreductase B8 subunit), NDUFA2

**Immunogen:**

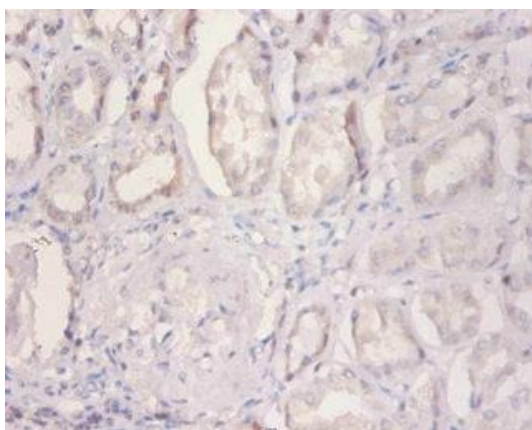
Recombinant Human NADH dehydrogenase [ubiquinone] 1 &alpha; subcomplex subunit 2 protein (4-99AA).

**Storage:**

Preservative: 0.03% Proclin 300. Constituents: 50% Glycerol, 0.01M PBS, PH 7.4

## Product Images

---



Immunohistochemistry of paraffin-embedded human kidney tissue using PACO31588 at dilution of 1:100.