

PACO31552

Product Information

Size:

50ug

Reactivity:

Human

Source:

Rabbit

Isotype:

IgG

Applications:

ELISA, IHC, IF

Recommended dilutions:

ELISA:1:2000-1:10000, IHC:1:20-1:200,
IF:1:50-1:200

Protein Background:

Enzyme which catalyzes the acetylation of polyamines. Substrate specificity: norspermidine = spermidine > > spermine > N(1)-acetylspermine > putrescine. This highly regulated enzyme allows a fine attenuation of the intracellular concentration of polyamines. Also involved in the regulation of polyamine transport out of cells. Acts on 1,3-diaminopropane, 1,5-diaminopentane, putrescine, spermidine (forming N(1)- and N(8)-acetylspermidine), spermine, N(1)-acetylspermidine and N(8)-acetylspermidine.

Gene ID:

SAT1

Uniprot

P21673

Synonyms:

Diamine acetyltransferase 1 (EC 2.3.1.57) (Polyamine N-acetyltransferase 1) (Putrescine acetyltransferase) (Spermidine/spermine N(1)-acetyltransferase 1) (SSAT) (SSAT-1), SAT1, SAT

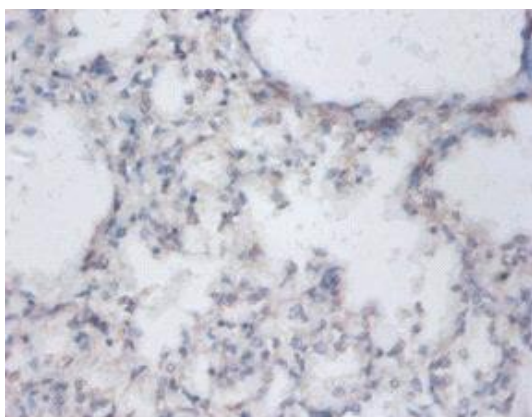
Immunogen:

Recombinant Human Diamine acetyltransferase 1 protein (5-171AA).

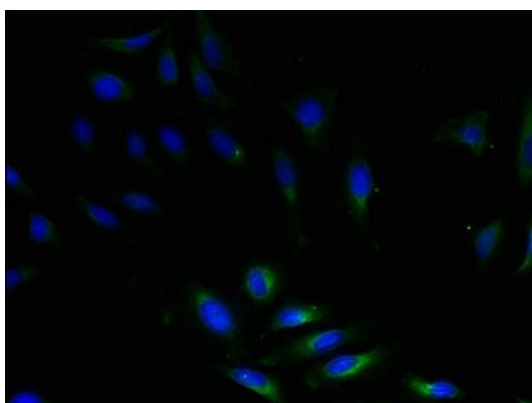
Storage:

Preservative: 0.03% Proclin 300. Constituents: 50% Glycerol, 0.01M PBS, PH 7.4

Product Images



Immunohistochemistry of paraffin-embedded human lung tissue using PACO31552 at dilution of 1:100.



Immunofluorescent analysis of HeLa cells using PACO31552 at dilution of 1:100 and Alexa Fluor 488-conjugated AffiniPure Goat Anti-Rabbit IgG(H+L).