

SAT1 Antibody



PACO31548

Product Information

Size:

50ug

Reactivity:

Human

Source:

Rabbit

Isotype:

IgG

Applications:

ELISA, WB, IHC

Recommended dilutions:

ELISA:1:2000-1:10000, WB:1:1000-1:5000,
IHC:1:20-1:200

Protein Background:

Gene ID:

SAT1

Uniprot

P21673

Synonyms:

Diamine acetyltransferase 1 (EC 2.3.1.57) (Polyamine N-acetyltransferase 1) (Putrescine acetyltransferase) (Spermidine/spermine N(1)-acetyltransferase 1) (SSAT) (SSAT-1), SAT1, SAT

Immunogen:

Recombinant Human Diamine acetyltransferase 1 protein (5-171AA).

Storage:

Preservative: 0.03% Proclin 300. Constituents: 50% Glycerol, 0.01M PBS, PH 7.4

Product Images



Western blot

All lanes: SAT1 antibody at 2 μ g/ml

Lane 1: 293T whole cell lysate

Lane 2: EC109 whole cell lysate

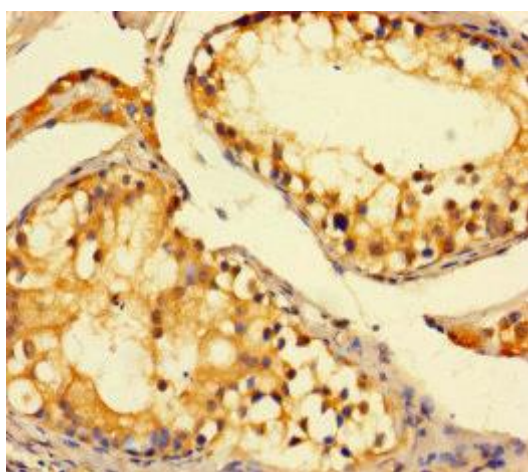
Secondary

Goat polyclonal to rabbit IgG at 1/15000 dilution

Predicted band size: 21 kDa

Observed band size: 90 kDa

.



Immunohistochemistry of paraffin-embedded human testis tissue using PACO31548 at dilution of 1:100.