

ZBED1 Antibody



PACO31536

Product Information

Size:

50ug

Reactivity:

Human

Source:

Rabbit

Isotype:

IgG

Applications:

ELISA, WB, IHC

Recommended dilutions:

ELISA:1:2000-1:10000, WB:1:1000-1:5000,
IHC:1:20-1:200

Protein Background:

Gene ID:

ZBED1

Uniprot

O96006

Synonyms:

Zinc finger BED domain-containing protein 1 (Putative Ac-like transposable element) (dREF homolog), ZBED1, ALTE DREF KIAA0785 TRAMP

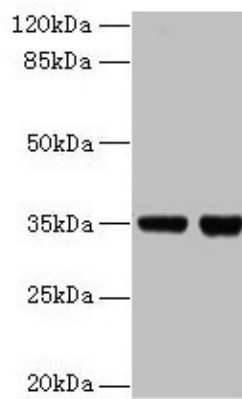
Immunogen:

Recombinant Human Zinc finger BED domain-containing protein 1 protein (1-210AA).

Storage:

Preservative: 0.03% Proclin 300. Constituents: 50% Glycerol, 0.01M PBS, PH 7.4

Product Images



Western blot

All lanes: ZBED1 antibody at 2 μ g/ml

Lane 1: EC109 whole cell lysate

Lane 2: 293T whole cell lysate

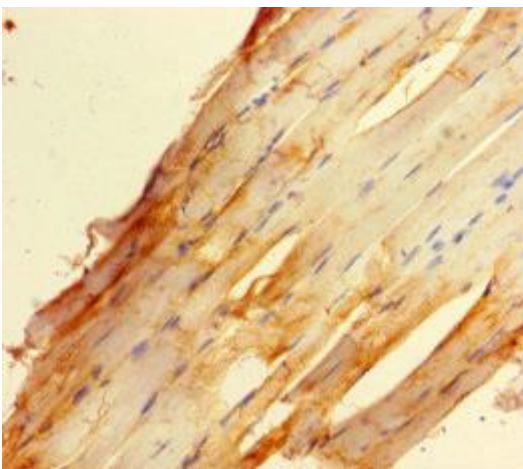
Secondary

Goat polyclonal to rabbit IgG at 1/15000 dilution

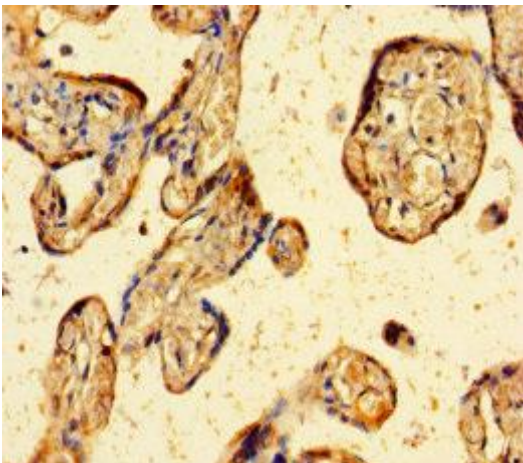
Predicted band size: 79 kDa

Observed band size: 35 kDa

.



Immunohistochemistry of paraffin-embedded human skeletal muscle tissue using PACO31536 at dilution of 1:100.



Immunohistochemistry of paraffin-embedded human placenta tissue using PACO31536 at dilution of 1:100.