

# ZNF625 Antibody



PACO31436

---

## Product Information

**Size:**

50ug

**Reactivity:**

Human, Mouse

**Source:**

Rabbit

**Isotype:**

IgG

**Applications:**

ELISA, WB

**Recommended dilutions:**

ELISA:1:2000-1:10000, WB:1:1000-1:5000

**Protein Background:**

May be involved in transcriptional regulation.

**Gene ID:**

ZNF625

**Uniprot**

Q96I27

**Synonyms:**

Zinc finger protein 625, ZNF625

**Immunogen:**

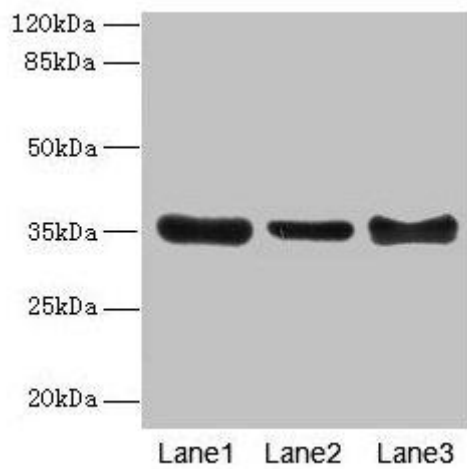
Recombinant Human Zinc finger protein 625 protein (1-306AA).

**Storage:**

Preservative: 0.03% Proclin 300. Constituents: 50% Glycerol, 0.01M PBS, PH 7.4

## Product Images

---



### Western blot

All lanes: ZNF625 antibody at 4 $\mu$ g/ml

Lane 1: Mouse brain tissue

Lane 2: Mouse lung tissue

Lane 3: Mouse ovarian tissue

Secondary

Goat polyclonal to rabbit IgG at 1/10000 dilution

Predicted band size: 35, 43 kDa

Observed band size: 35 kDa