

PACO31268

---

## Product Information

**Size:**

50ug

**Reactivity:**

Human

**Source:**

Rabbit

**Isotype:**

IgG

**Applications:**

ELISA, IF

**Recommended dilutions:**

ELISA:1:2000-1:10000, IF:1:50-1:200

**Protein Background:**

Catalyzes the O-methylation, and thereby the inactivation, of catecholamine neurotransmitters and catechol hormones. Also shortens the biological half-lives of certain neuroactive drugs, like L-DOPA, alpha-methyl DOPA and isoproterenol.

**Gene ID:**

LRTOMT

**Uniprot**

Q8WZ04

**Synonyms:**

Transmembrane O-methyltransferase (EC 2.1.1.6) (Catechol O-methyltransferase 2) (Protein LRTOMT2), LRTOMT, COMT2 TOMT

**Immunogen:**

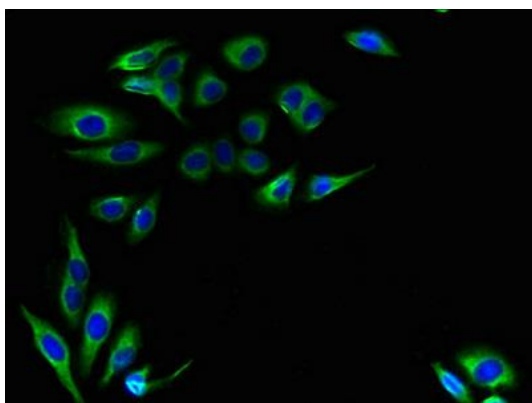
Recombinant Human Transmembrane O-methyltransferase protein (31-264AA).

**Storage:**

Preservative: 0.03% Proclin 300. Constituents: 50% Glycerol, 0.01M PBS, PH 7.4

## Product Images

---



Immunofluorescent analysis of HepG2 cells using PACO31268 at dilution of 1:100 and Alexa Fluor 488-conjugated AffiniPure Goat Anti-Rabbit IgG(H+L).