

PACO31080

Product Information

Size:

50ug

Reactivity:

Human

Source:

Rabbit

Isotype:

IgG

Applications:

ELISA, IHC

Recommended dilutions:

ELISA:1:2000-1:10000, IHC:1:20-1:200

Protein Background:

Required for cerebral cortical development. Plays a role in neuronal proliferation and migration. Plays a role in mother-centriole-dependent centriole duplication; the function seems also to involve CEP152, CDK5RAP2 and CEP63 through a stepwise assembled complex at the centrosome that recruits CDK2 required for centriole duplication.

Gene ID:

WDR62

Uniprot

O43379

Synonyms:

WD repeat-containing protein 62, WDR62, C19orf14

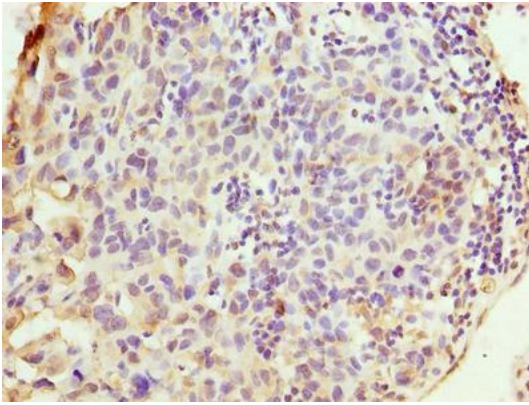
Immunogen:

Recombinant Human WD repeat-containing protein 62 protein (889-1188AA).

Storage:

Preservative: 0.03% Proclin 300. Constituents: 50% Glycerol, 0.01M PBS, PH 7.4

Product Images



Immunohistochemistry of paraffin-embedded human bladder cancer using PACO31080 at dilution of 1:100.