

WDR27 Antibody



PACO31068

Product Information

Size:

50ug

Reactivity:

Human

Source:

Rabbit

Isotype:

IgG

Applications:

ELISA, IHC

Recommended dilutions:

ELISA:1:2000-1:10000, IHC:1:20-1:200

Protein Background:

nucleoplasm.

Gene ID:

WDR27

Uniprot

A2RRH5

Synonyms:

WD repeat-containing protein 27, WDR27

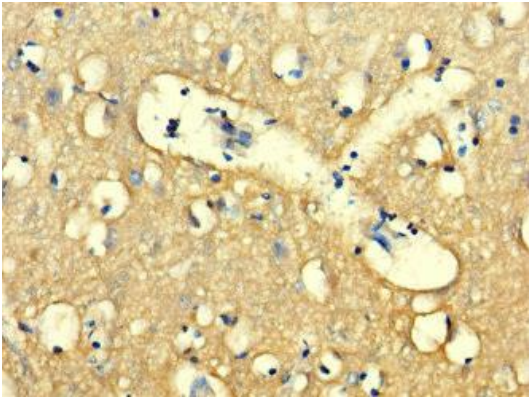
Immunogen:

Recombinant Human WD repeat-containing protein 27 protein (501-730AA).

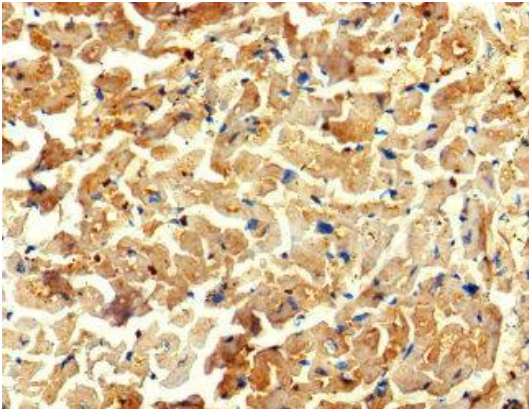
Storage:

Preservative: 0.03% Proclin 300. Constituents: 50% Glycerol, 0.01M PBS, PH 7.4

Product Images



Immunohistochemistry of paraffin-embedded human brain tissue using PACO31068 at dilution of 1:100.



Immunohistochemistry of paraffin-embedded human heart tissue using PACO31068 at dilution of 1:100.