

RPS10 Antibody



PACO31000

Product Information

Size:

50ug

Reactivity:

Human

Source:

Rabbit

Isotype:

IgG

Applications:

ELISA, WB

Recommended dilutions:

ELISA:1:2000-1:10000, WB:1:500-1:5000

Protein Background:

Component of the 40S ribosomal subunit.

Gene ID:

RPS10

Uniprot

P46783

Synonyms:

40S ribosomal protein S10 (Small ribosomal subunit protein eS10), RPS10

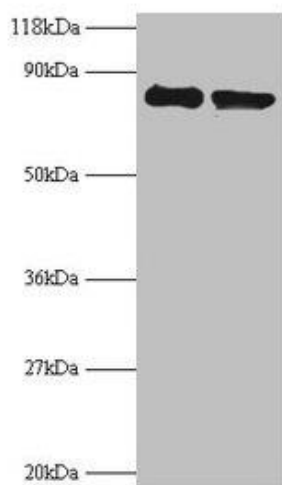
Immunogen:

Recombinant Human 40S ribosomal protein S10 protein (4-165AA).

Storage:

Preservative: 0.03% Proclin 300. Constituents: 50% Glycerol, 0.01M PBS, PH 7.4

Product Images



Western blot

All lanes: RPS10 antibody at 2 μ g/ml

Lane 1: EC109 whole cell lysate

Lane 2: 293T whole cell lysate

Secondary

Goat polyclonal to rabbit IgG at 1/15000 dilution

Predicted band size: 19 kDa

Observed band size: 80 kDa